

INSTRUCTION SHEET

Slim Relay & Socket Operating Instruction RV8H Series

Type No. SV9Z-J20 □

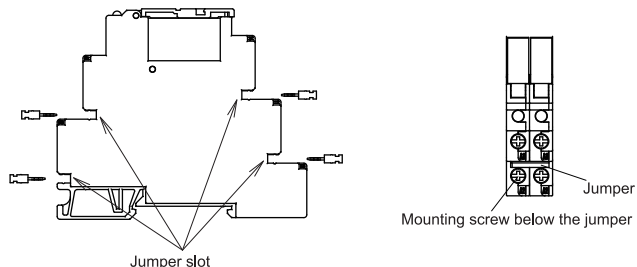
Read this instruction sheet to make sure of correct operation before starting installation, wiring, operation, maintenance, and inspection of this product. Also make sure that this instruction sheet is kept by end users.

Safety Precautions

- Turn off power to the sockets before starting installation, removal, wiring, maintenance, and inspection of the sockets.
- Failure to turn power off may cause electrical shocks or fire hazard.
- To ensure safety, make sure that all descriptions in the operation instructions are followed strictly.

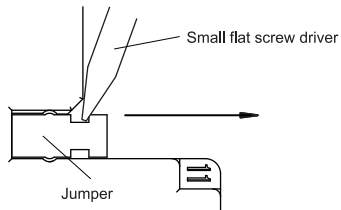
1. Installation

Insert the jumper into the jumper slot completely. The mounting screw below the jumper must be visible completely.

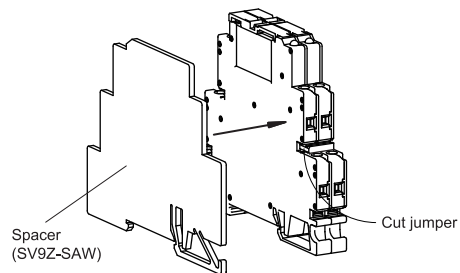
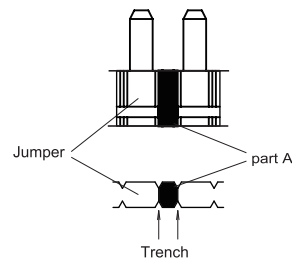


2. Removal

Using a small flat screwdriver, pull out the jumper as shown in the figure below. When using a jumper with many poles, do not attempt pulling out the jumper from one socket only. Slowly pull out the jumper by applying the screwdriver on several poles.



- When cutting the jumper to the required number of poles
Cut the jumper along the trench to the required number of poles with a nipper.



CAUTION

- Make sure that part A (between the poles) is cut off, otherwise sufficient insulation distance cannot be secured.
- When the jumper is cut, the internal metal part is exposed. Make sure to install a spacer (Note1) next to the socket.

Note1: Spacer is sold separately, Type No. SV9Z-SAW