



Product Service

CERTIFICATE

No. B 18 02 13332 259

Holder of Certificate: IDEC CORPORATION
 2-6-64 Nishimiyahara, Yodogawa-Ku
 Osaka
 532-0004 JAPAN



Production Facility(ies): 16464

Certification Mark:



Product: Internal lights Indicator

Model(s): LH1D series

Parameters:

Input voltage:	24 VAC / DC (for cable type. 50 / 60 Hz when 24 VAC), 24 VDC (for connector type)
Input power / current:	0.6 W / 17 mA
Rated insulation voltage:	32 V
Class of equipment:	III
Degree of protection:	IP67, IP65 or IP40

Remarks:
 When installing/inserting the equipment all requirements of the mentioned test standard must be fulfilled.


Tested according to: EN 60598-2-1:1989

The product was tested on a voluntary basis and complies with the essential requirements. The certification mark shown above can be affixed on the product. It is not permitted to alter the certification mark in any way. In addition the certification holder must not transfer the certificate to third parties. See also notes overleaf.

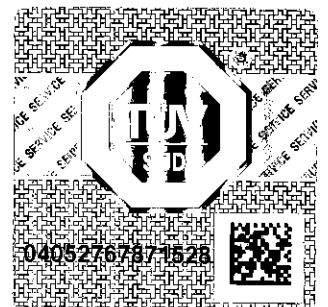
Test report no.: 73526193-02

Valid until: 2023-02-14

Date, 2018-02-19


 (Shigehisa Ishikawa)

Page 1 of 2



Certificate Attachment 1
 Certificate No.



Product Service

B 18 02 13332 259

Nomenclature:

LH1D - D3 Z H Q4 C10 R - W - #
 1 2 3 4 5 6 7 8 9



- 1: Basic series designation
 LH1D
- 2: Lens shape and size
 D3: Dome large size
- 3: Body colour code
 One letter or blank denoting colour
- 4: Degree of protection
 L: IP40
 P: IP65
 H: IP67
- 5: Supply voltage
 Q4: 24VAC/DC (for cable type) or 24VDC (for connector type)
- 6: Cable length and terminal configuration
 C05: 0.5m cable
 C10: 1m cable
 C20: 2m cable
 C30: 3m cable
 C50: 5m cable
 CN1: 0.3m cable with M12 connector (connector type)
- 7: Illumination colour code
 One to four letters denoting colour
- 8: Lens colour code
 One letter or blank denoting colour
- 9: Additional letters or numbers or blank for optional may include manufacturer ID
 or other, not affected to safety aspects