



## SI9Z-J5 Jumper Installation Instructions

1. SI9Z-J5  
The SI9Z-J5 is a special jumper for SI9Z-11L and SI9Z-11L sockets (SU Sockets). The SI9Z-J5 jumper is for installing five sockets. When installing less than five sockets, cut the jumper according to the instruction under 3. Installing Two, Three, or Four SU Sockets on the SI9Z-J5 Jumper.  
The SI9Z-J5 jumper is for coil terminals only.  
Rated current: 3A  
Material  
Conductor: Nickel-plated brass  
Sheath: ABS resin

2. Installation  
2-1 Referring to figure A below, install the marking plate in the socket loosely.

- 2-2 Making sure that the SI9Z-J5 jumper is in the correct direction, insert the blades into the ports in the groove of SU sockets. See below.

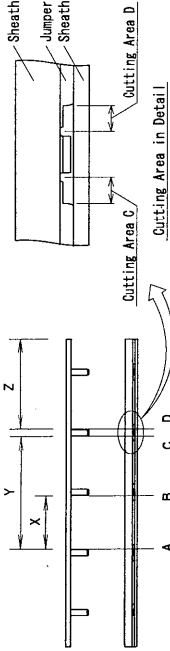
- 2-3 Press down the marking plate to secure the jumper.  
The installation of jumper is now complete.

**Caution:**

- When using a jumper, make sure that the marking plate and the jumper are securely installed. Loose fitting will cause the jumper to fall off, resulting in malfunction.

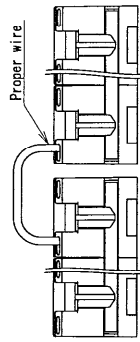
3. Installing Two, Three, or Four SU Sockets on the SI9Z-J5 Jumper  
3-1 As shown below, slide the jumper in the sheath so that the jumper aligns with the center of the sheath.

- 3-2 With the sheath properly installed on the jumper, cut the jumper at the points shown below using cutting pliers. Referring to the figure shown at lower right, make sure that the sheath and jumper are cut within the cutting area. Dispose of unused parts according to local waste collection requirements.



- 3-3 After cutting the jumper and sheath, slide the jumper as shown below, so that the ends of jumper are not exposed.

4. Jumper Wiring to Six or More SU Sockets  
To make jumper wiring to six or more SU sockets, connect every five sockets using whole jumpers and the remaining sockets using a cut jumper. Then connect the two terminals on adjoining sockets using a proper wire meeting the current requirements. See below.  
[Jumper wiring of terminals 14]



### Applicable Wire

Solid Wire	0.2 to 1.5 mm <sup>2</sup>
Stranded Wire	0.2 to 1.25 mm <sup>2</sup>
AWG	24 to 16
* Use a wire with cable insulation diameter of $\phi 3.15$ mm maximum.	
* Strip the cable insulation 9 to 10 mm from the end.	

### Warning:

- Turn off the power to the SI9Z-J5 jumper before starting installation, removal, wiring maintenance, and inspection of the SI9Z-J5 jumper. Failure to turn power off may cause electrical shocks or fire hazard.

### Caution:

- To avoid short circuit due to incorrect wiring, confirm which terminals are connected to the jumper before starting wiring.



IDEAC IZUMI CORPORATION

<http://www.idec.com>

No. B-782 (0) 2003.01