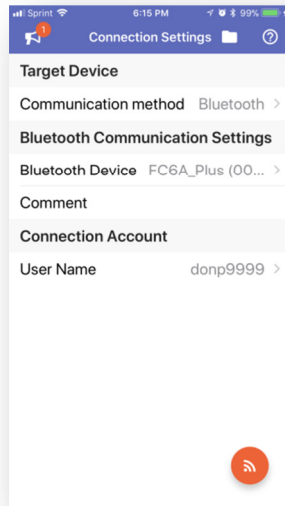
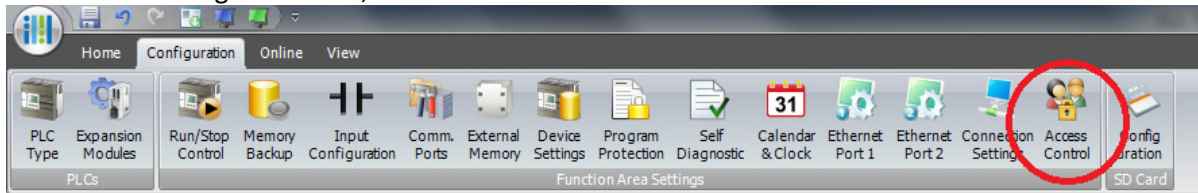


App Notes

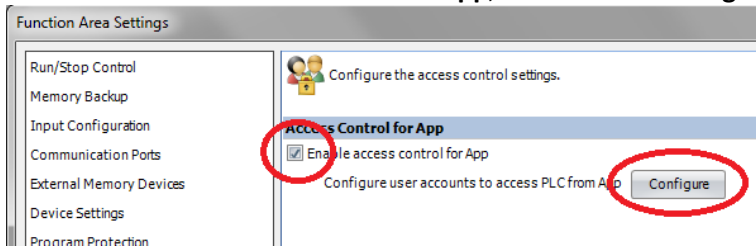
FC6A WindEDIT Lite App via Ethernet Communication



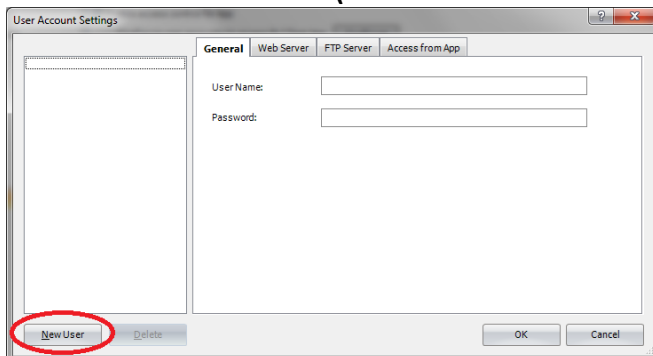
1. In WindLDR Configuration tab, click **Access Control**.



2. Check the **Enable access control for App**, and click the **Configure** button.



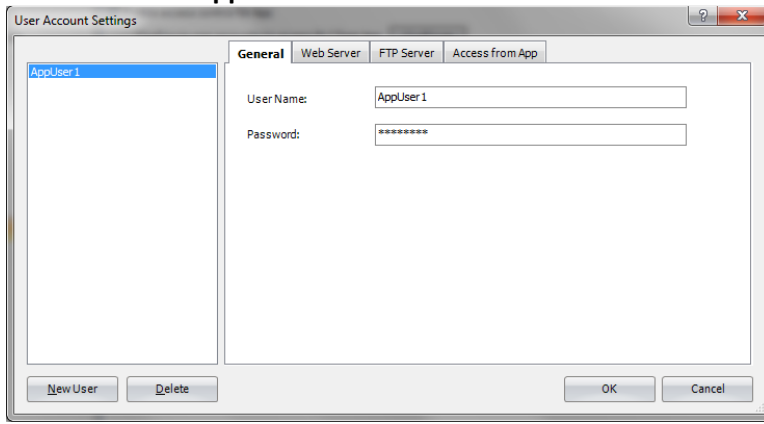
3. Click the **New User** button. **(PLEASE MAKE SURE YOU CLICK THIS BUTTON)**



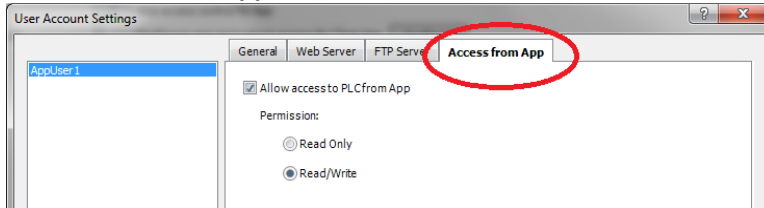
4. Assign the User Name and Password. For this example, we'll use the following username and password.

User Name: **AppUser1**

Password: **appuser1**



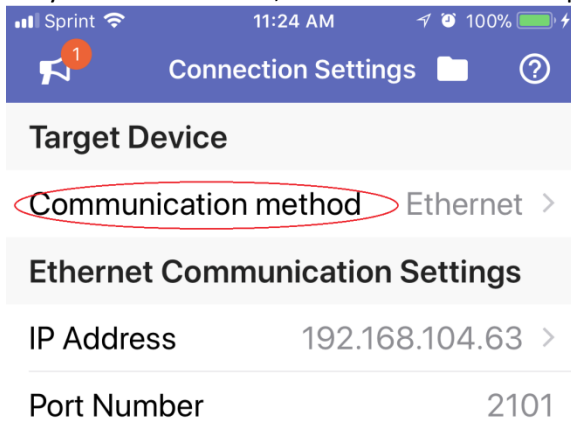
5. Click **Access from App** tab, and make sure **Read/Write** is checked.



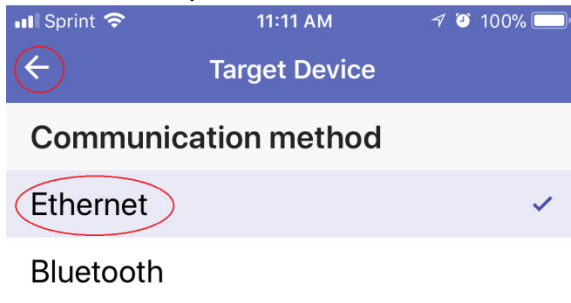
6. Click OK, OK to close the dialog boxes.

7. Download your ladder project to the FC6A PLC.

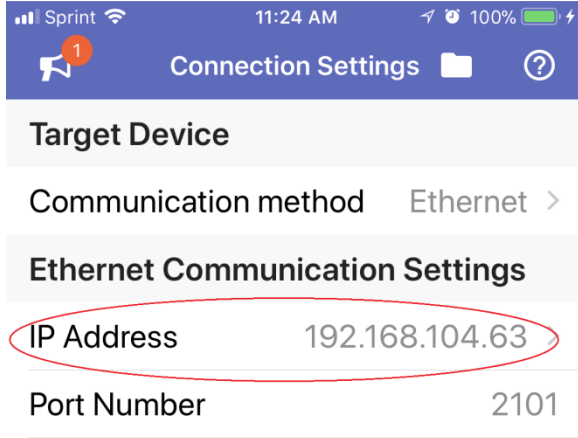
8. On your mobile device, launch WindEDIT Lite App and tap **Communication method**.



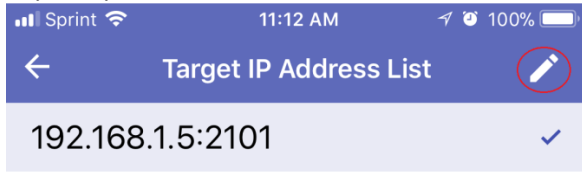
9. Select **Ethernet**, then click the ← arrow



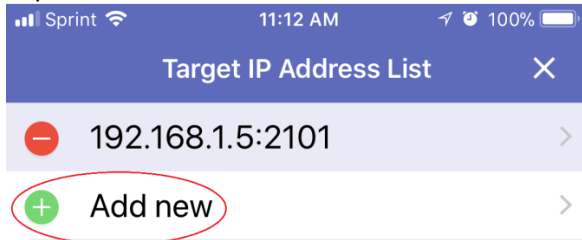
10. Tap **IP Address**



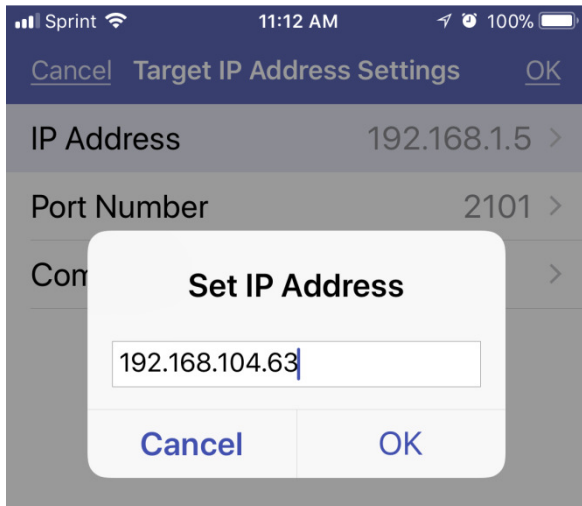
11. Tap the pencil icon



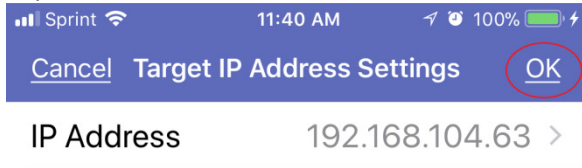
12. Tap + **Add New**



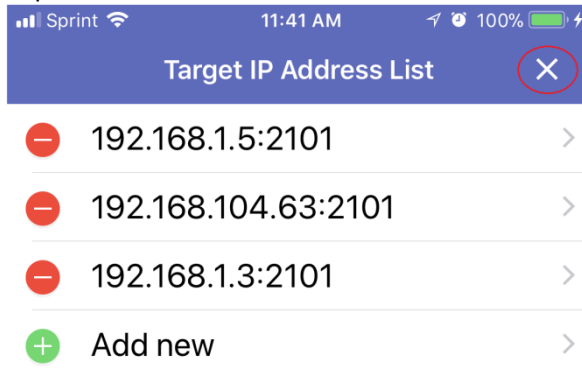
13. Tap IP Address and enter your PLC IP address, then tap OK.
DO NOT use the IP address below



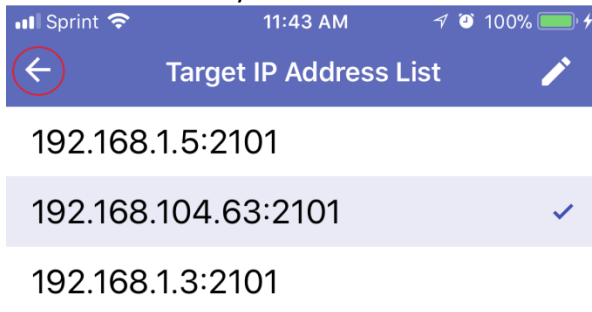
14. Tap OK



15. Tap the X icon



16. Make sure the PLC you want to connect is checked. Tap the ← arrow



17. Tap **User Name**

Comment

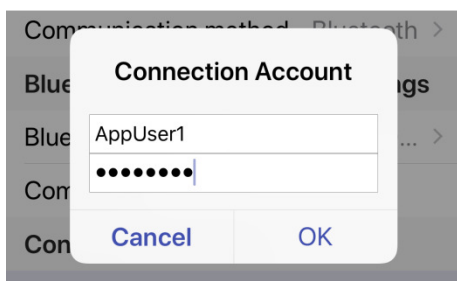
Connection Account

User Name donp9999 >

18. Enter User Name and Password as below, and tap **OK**.

User Name: **AppUser1**

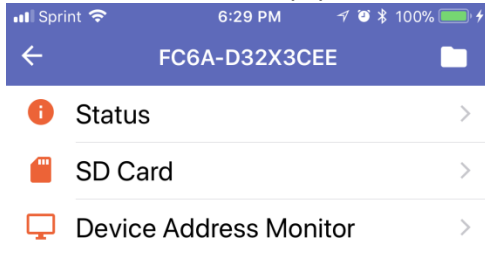
Password: **appuser1**



19. Tap the connect orange icon

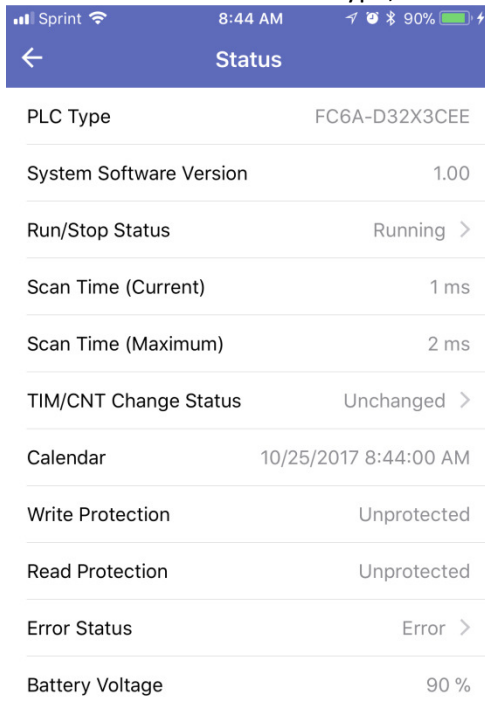


20. If connected successfully, your screen will look like this.



21. Tap **Status**.

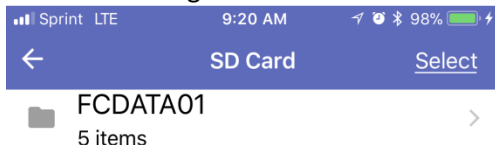
The Status screen is similar to the WindLDR Monitor PLC Status screen, where user can monitor the status of the connected PLC such as PLC Type, Firmware, Run/Stop, Scan Time, Error Status, Battery Voltage, etc.

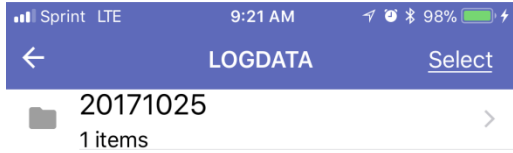
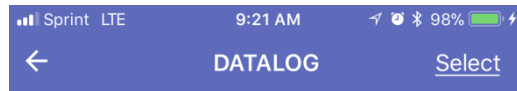
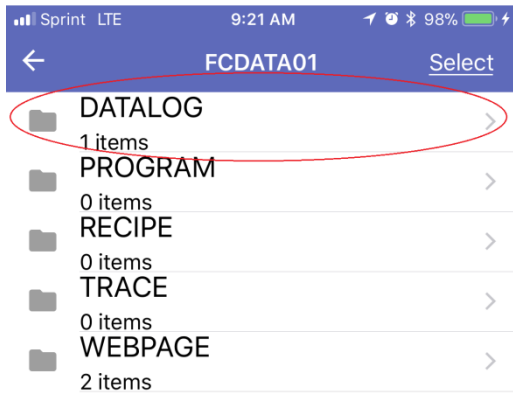


22. Tap **SD Card**. The SD Card is greyed out if there's no SD card inserted.

Navigate to the LogData folder until you see the .csv file.

Note: Assuming the SD card is inserted and there's already a logged file stored in the SD card.

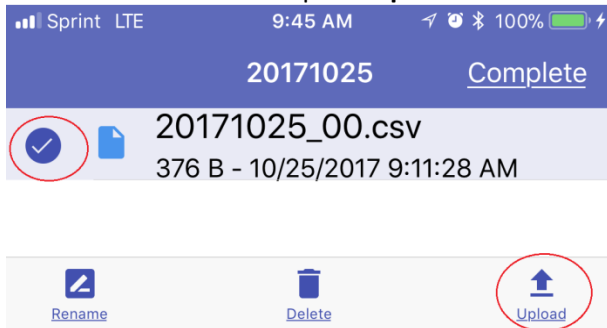




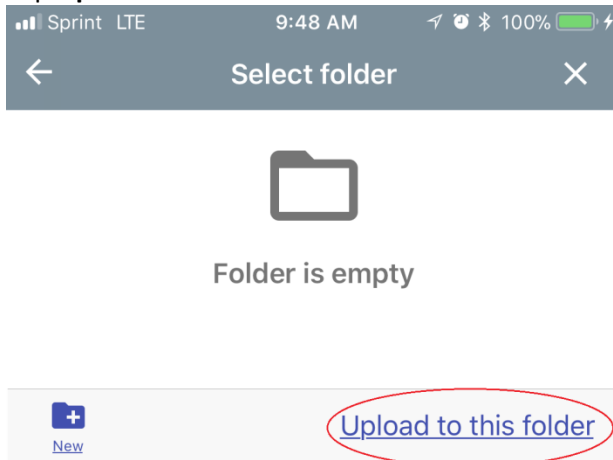
23. Tap **Select**



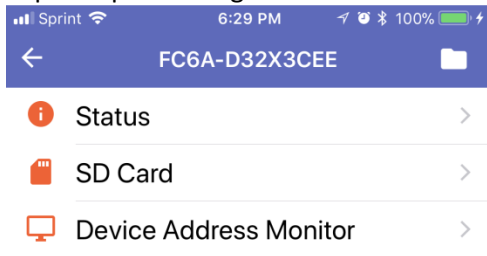
24. **Select** the .csv file and tap the **Upload** icon



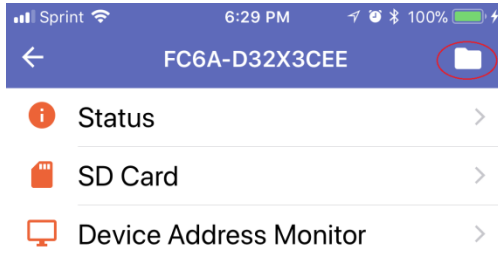
25. Tap **Upload to this folder**



26. Tap Complete and go back to this screen



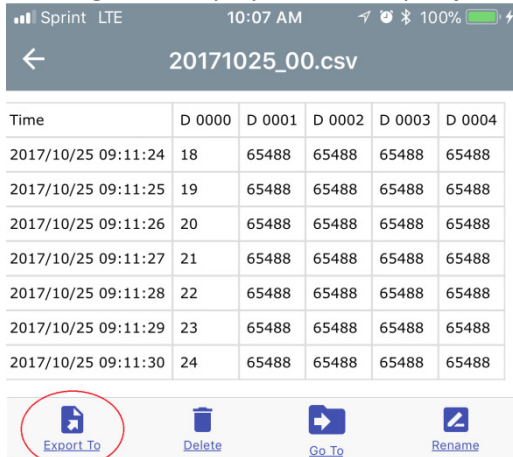
27. Tap the folder icon



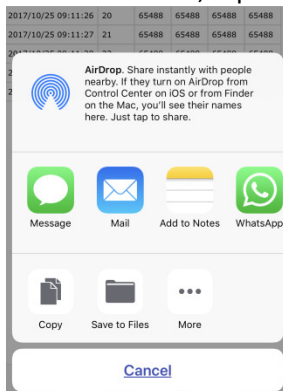
28. Tap the .csv file



29. Your log file is displayed here. Tap **Export to**, to Text, Email or upload .csv file to a cloud database.



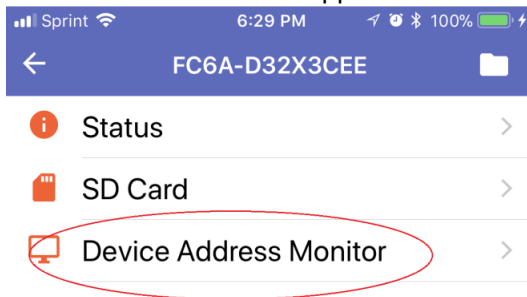
30. To Text or Email, tap the Message or Mail icon.



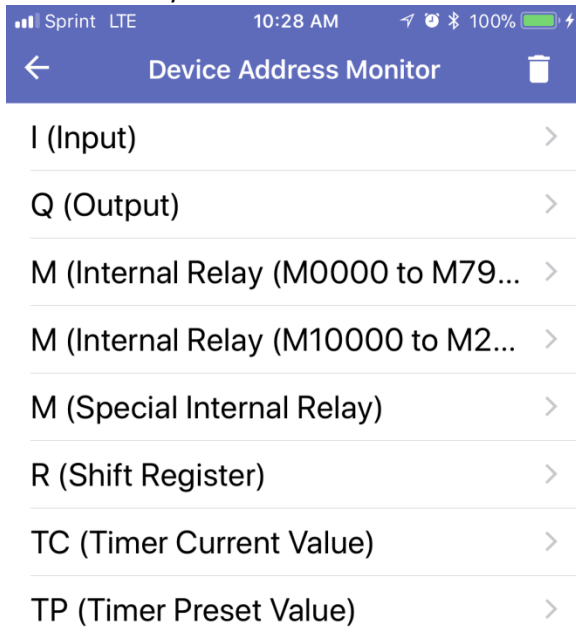
31. To send it to a cloud database, tap the database icon. Tap Copy to **Egnyte** icon.
Cloud database icons will automatically display here if you have the database App installed.



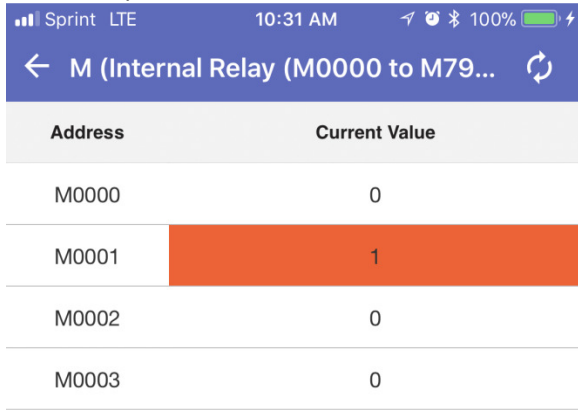
32. Go back to the WindEDITApp home screen below and tap Device Address Monitor



33. This is where you can monitor and control all the PLC parameters I, Q, M, R, T, C, and D. Tap **M (Internal Relay)**



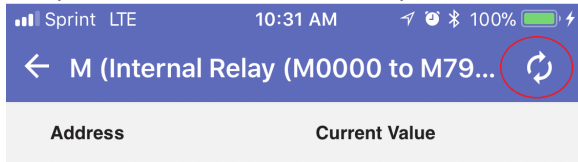
34. Double tap **M0001** to turn it on.



Address	Current Value
M0000	0
M0001	1
M0002	0
M0003	0

35. Tap this icon for auto refresh.

PLC parameters will automatically refresh in the App.



Address	Current Value
M0000	0
M0001	1
M0002	0
M0003	0

- 36. Run/Stop: Start and Stop the PLC
- Download: Download program to PLC with ZLD file store in App Folder
- Upload: Upload ZLD program from PLC and store in App Folder
- Format: Format the SD card

