

B-947(12)



# WindO/I-NV2, WindO/I-NV3 Utility Downloader

---

Instruction Manual

IDEC CORPORATION

# Introduction

---

This instruction manual explains the operation and handling of the “WindO/I-NV2, WindO/I-NV3 Utility Downloader”.

Before using the software, read this manual thoroughly to familiarize yourself with this product's function and performance, and to ensure correct operation.

## **Publication history**

June 2005: 1st Edition

March 2006: 2nd Edition

May 2006: 3rd Edition

October 2006: 4th Edition

March 2007: 5h Edition

November 2008: 6th Edition, 7th Edition

February 2011: 8h Edition

July 2011: 9th Edition

October 2011: 10th Edition

February 2012: 11th Edition

March 2013: 12th Edition

# Contents

---

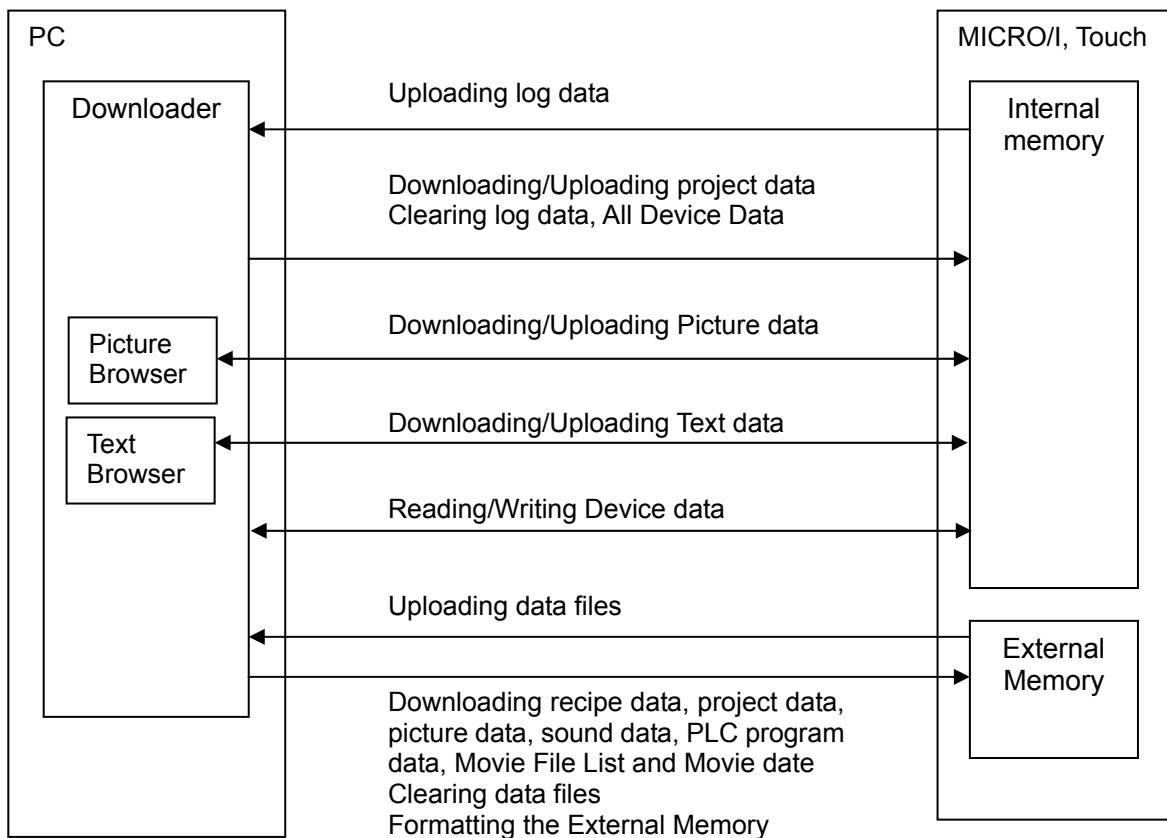
<b>Contents .....</b>	<b>1</b>
<b>1 Function of Downloader .....</b>	<b>1</b>
<b>2 Hardware Requirements .....</b>	<b>2</b>
<b>3 Setup .....</b>	<b>3</b>
3-1 Installing .....	3
3-2 Uninstalling .....	3
<b>4 Restrictions .....</b>	<b>4</b>
<b>5 Screen Configurations .....</b>	<b>5</b>
<b>6 Operations.....</b>	<b>6</b>
6-1 Starting Downloader.....	6
6-2 Communication setting.....	6
6-3 Downloading Project File.....	7
6-4 Uploading Project Data .....	9
6-5 Uploading Log Data .....	10
6-6 Clearing Log Data.....	11
6-7 External Memory Maintenance.....	12
6-8 Change Picture Data .....	15
6-9 Change Text Data .....	17
6-10 Read Device Data.....	20
6-11 Write Device Data .....	21
6-12 System Information .....	22
6-13 Displaying Version Information .....	23
<b>7 Formatting Log Data.....</b>	<b>24</b>
<b>8 Download Options .....</b>	<b>25</b>
<b>9 Utilizing from Another Software.....</b>	<b>27</b>
9-1 Function .....	29
9-2 Use in Another Software.....	32
9-2-1 Using from Run... ..	32
9-2-2 Using from Power Point.....	33
9-2-3 Using from Excel.....	35

# 1 Function of Downloader

The Downloader, which can operate separately from WindO/I-NV2, WindO/I-NV3, enables the user to communicate with the MICRO/I, Touch easily, regardless of whether the user knows its operation or not. In addition, the Downloader can communicate with one or more MICRO/Is, Touch, handling multiple data.

Downloader has following functions.

- Downloads/Uploads project data to the MICRO/I, Touch with a quick operation.
- Uploads log data - Alarm Log, Data Log, Operation Log - saved in the MICRO/I, Touch to the personal computer in the CSV file format.
- Clears log data - Alarm Log, Data Log, Operation Log, All Device Data- saved in the HG2G/HG3G/HG4G/Touch.
- Downloads Recipe Data, Project Data, Picture Data, Sound Data, PLC program data, Movie File List and Movie date to the External Memory.
- Uploads and initializes data files in the External Memory.
- Formats the External Memory.
- Displays the system information.
- Change Picture Data and Text Data.
- Read/Write the specified Device Data.



## 2 Hardware Requirements

---

The hardware requirements are as follows.

Item	Specifications
OS	Windows 7, Windows Vista (32-bit), Microsoft Windows XP with Service Pack 3 (32-bit)
Computer	PC-AT or compatible
CPU	1 GHz processor or faster
Memory	512 MB of installed RAM (1 GB recommended)
Hard Disk	800 MB of available hard disk space
Graphics	XGA (1024 x 768) or higher screen resolution
Users	Administrator privilege required

### Caution

- To use USB port of HG2F, the OS should be Windows XP/Vista/7, and USB1.1/2.0 should be available. 64-bit Windows is not supported.
- To use USB port of HG3G/HG4G/Touch, the OS should be Windows XP/Vista/7, and USB1.1 should be available.
- 
- You must install WindO/I-NV2, WindO/I-NV3 or Downloader prior to connecting MICRO/I, Touch using USB the first time. If you connect without the installation, OS invokes the dialog to install appropriate software driver. At that time, select cancel, and then install one of above prior to connecting. If one of above is installed properly, the software driver will be loaded automatically.

## 3 Setup

---

### 3-1 Installing

---

Use the following operations to install the Downloader.

1. Insert the Automation Organizer Application DVD into the DVD-ROM drive.
2. The Automation Organizer setup window appears.
3. Select the language you want to install from setup languages and then click **Install**.  
If the Automation Organizer setup window does not appear automatically, go to the **Start** menu, click **Run**. In the Open box, type "d:¥AO\_Start" (**d** is the name of the DVD-ROM drive) and click **OK**.
4. Follow the instructions on the screen. A dialog box prompts you to select a setup type.  
Select **Complete** and then click **Next**.  
To only install the Downloader, select **Custom**, and select only the **Downloader** check box.
5. Then follow the instructions on the screen.

### 3-2 Uninstalling

---

Use the following operations to uninstall the Downloader.

Select **Control Panel > Add or Remove Programs** to uninstall the Downloader.

# 4 Restrictions

---

The Downloader has following restrictions of use.

- **Required software version for WindO/I-NV2, WindO/I-NV3 and MICRO/I, Touch**

The Downloader has following restrictions due to the version of the WindO/I-NV2, WindO/I-NV3 or the version of the runtime software for the MICRO/I, Touch.

The download of the "Project Data for Downloader":	WindO/I-NV2 version 2.82 or later
The download of the "Project Data for External Memory":	WindO/I-NV2 version 2.50 or later
The upload:	All WindO/I-NV2, WindO/I-NV3s (On the condition that the upload of project data requires the runtime software version 2.00 or later)
The initialization:	All WindO/I-NV2, WindO/I-NV3s
The External Memory maintenance:	Runtime software version 1.80 or later (On the condition that the download of the running recipe/project data requires the runtime software version 2.00 or later)
Change Picture Data and Text Data:	WindO/I-NV2 version 3.30 or later
Read/Write the specified Device Data:	WindO/I-NV2 version 3.30 or later
The system information:	All WindO/I-NV2, WindO/I-NV3s (On the condition that the External Memory information requires the version 1.80 or later.)
Sound Data:	WindO/I-NV2 version 4.20 or later

When using WindO/I-NV2 version 4.40, WindO/I-NV3 version 5.00 or later or using HG3G/HG4G/Touch, all of functions are available.

- **Formatting Log Data**

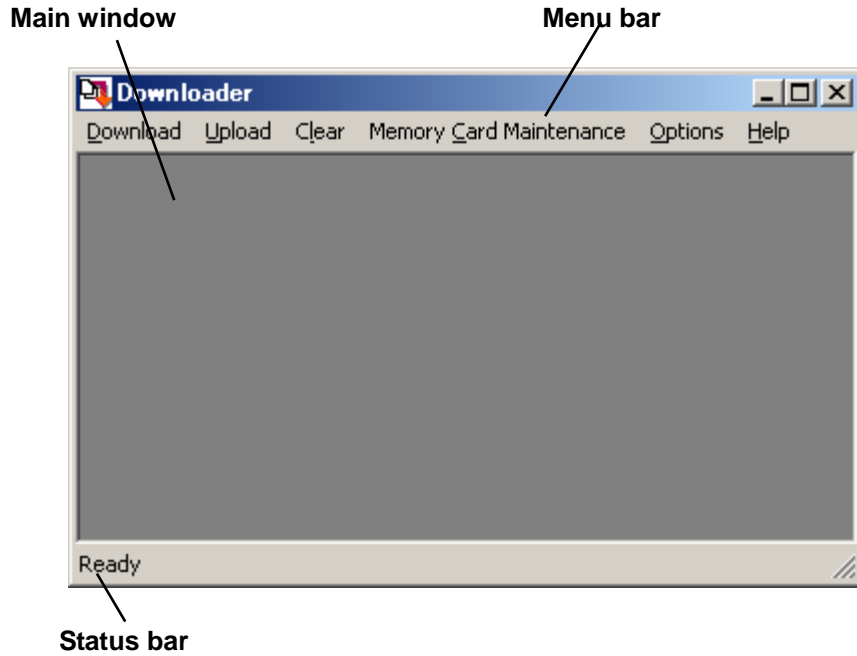
The Downloader make the format of log data - such as "Alarm Log", "Data Log" and "Operation Log" uploaded by the Downloader – into the CSV file format along with the other format saved in the External Memory.

For more information, see "7 Formatting Log Data".

# 5 Screen Configurations

---

The screen configuration of the Downloader is as follows.



Main window	Functions as the work area of the Downloader
Menu bar	Selects each functions
Status bar	Displays status of selecting menu.



# 6 Operations

The following steps explain how to use the Downloader.

## 6-1 Starting Downloader

To start the Downloader, select **Programs - Automation Organizer - Utility Programs - Downloader** from the start menu.

## 6-2 Communication setting

Use the following operations to make the communication setting between the MICRO/I, Touch and the personal computer.

1. Select **Options - Communication Settings...** from the menu bar.
2. Select the communication target.  
When selecting **MICRO/I, Smart AXIS Touch**, the Downloader communicates with the one master device.  
When selecting **O/I Link Slaves**, the Downloader communicates with slaves, that is, multiple MICRO/Is.  
External Memory is available to only “Change Picture Data” or “Change Text Data”.
3. Select the port.

### COM:

Enable you to select the port of use from **COM 1** to **COM 256**, and to set the baud rate.

### Ethernet:

Enable you to set **Time out (min)** value in minutes.

### Ethernet (via Web Server Unit)

The IDEC Web Server Unit is the RS232C/Ethernet converter.

By connecting the Web Server Unit to the maintenance port (serial 2 port), it is possible to perform the communication via Ethernet.

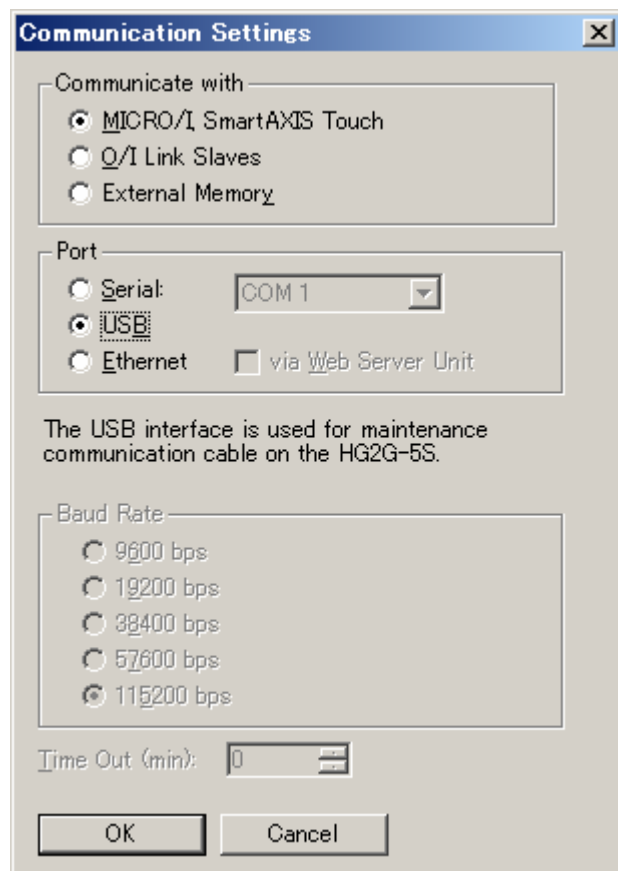
Baud Rate is for the setting between Web Server Unit and MICRO/I and Time Out is for the setting between PC and Web Server Unit.

For details of the Web Server Unit, refer to the manual of the unit.

This port is not available in the case of HG2G/HG3G/HG4G/Touch.

### USB:

Select this port when communicating via USB port on MICRO/I, Touch.



## 6-3 Downloading Project File

The Downloader can download the project data made for the Downloader on the WindO/I-NV2, WindO/I-NV3, or the project data made for the External Memory, to the MICRO/I, Touch.

Most of all, the “Projects Data for Downloader” (\*.z##”) can be easily downloaded to the MICRO/I, Touch with a quick operation. (##: 1f, 2f, 2g, 2s, 3f, 4f, ft)

In addition, the Downloader can download the runtime software or the optional font at same time, depending on the type of the “Project Data for Downloader”.

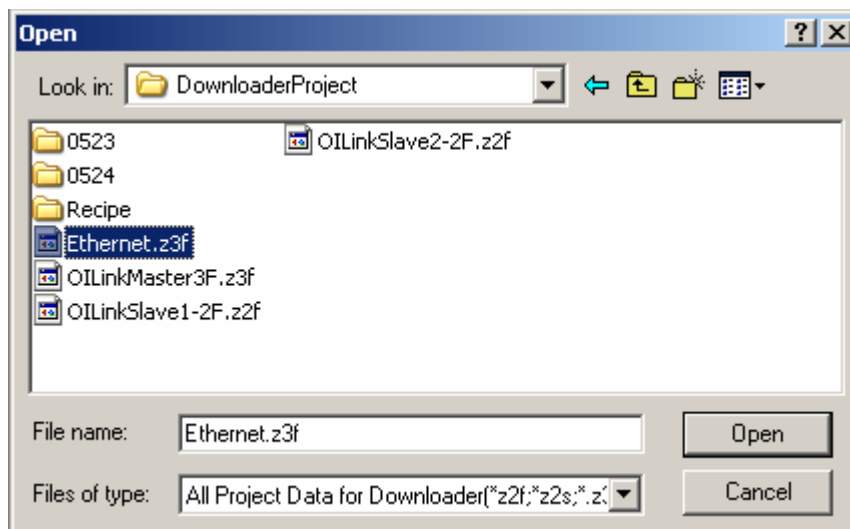
⇒ For more information on how to configure the downloading, see “8 Download Options”.

Use the following operations to download the project.

### • Downloading Project File

(The following example is when selecting **MICRO/I, Smart AXIS Touch** for **Communication with**, and **COM Port** or **USB** for **Port**.)

1. Select **Download - Project for Downloader** from the menu bar.
2. Select the project data file for the Downloader on the **Open** dialog box and then click **Open** button.



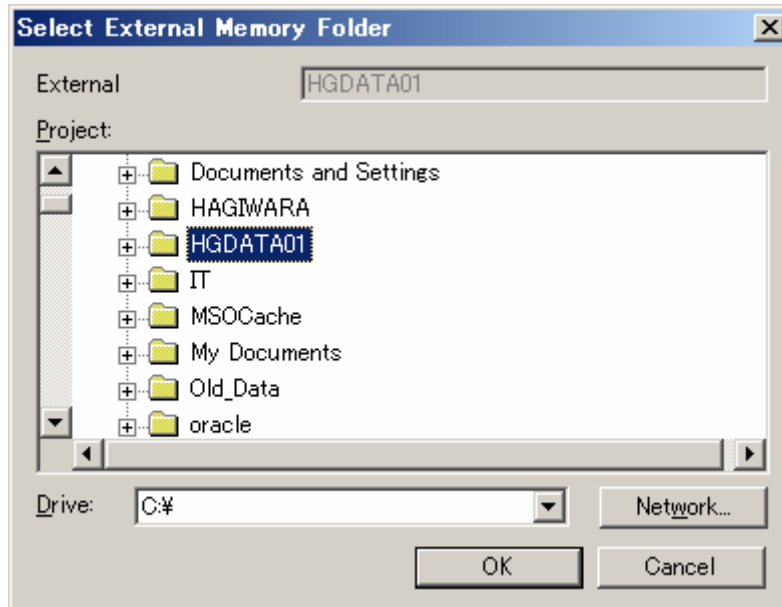
3. Click **Yes** button to authorize the confirmation message for the download.
4. The Downloader begins to download and displays the progress indicator. The communication conditions in this instance are the one you set in **Options - Communication Settings...**
5. After finishing the download, click **Close** button.

### • Downloading “Project for Downloader” with Quick Operation

1. Double-click the project data file for the Downloader on the explorer. The Downloader starts automatically and begins to communicate with the MICRO/I, Touch.  
⇒ The communication conditions in this instance are the one created at time of the communication setting of this project data on the WindO/I-NV2, WindO/I-NV3.
2. Click **Yes** button to authorize the confirmation message for the download.
3. The Downloader begins to download and displays the progress.
4. Click **Close** button after finishing the download.

- **Downloading “Project for External Memory”**

1. Select **Download – Project for External Memory** from the menu bar.
2. Select the access folder for the download from the **Select External Memory Access Folder** dialog box. Then click **OK** button.



3. Click **Yes** button to authorize the confirmation message for the download.
4. The Downloader displays the progress indicator for the download. The communication conditions in this instance are the one you set on **Options - Communication Settings...**
5. Click **Close** button after finishing the download.

- ▶ When you set the password to the user name to which the Administrator Group is allocated in the communicating MICRO/I, Touch, the Downloader displays the **Enter Password** dialog box.  
Enter the password to this user name.  
Entering the correct password made the Downloader continue to download.  
However, it is not necessary to select the user name, when the runtime software version is 1.90 or earlier.
- ▶ Runtime software and font data should be included to the project data.

### **Procedure differences according to the communication setting**

Applicable operating procedures at the beginning of the communication depend on the setting.

When selecting **MICRO/I, Smart AXIS Touch** for **Communicate with**, and **Ethernet** for **Port**

1. The Downloader opens the **Target IP Address** dialog box.
2. Click **OK** button to specify the target IP address.
3. The Downloader begins to download.

When selecting **O/I Link Slaves** for **Communicate with**

1. The Downloader opens the **Target Slaves** dialog box.
2. Select target slaves and click **OK** button.

- ⇒ Only when selecting **Ethernet** for **Port**, the Downloader displays the **Master IP Address** and “...” button on the edit box. Specify the target IP address here.

3. The Downloader begins to download.


## 6-4 Uploading Project Data

---

The Downloader can upload the project data in the MICRO/I, Touch with the font data, the runtime software, and the recipe data in the External Memory at the same time.

Use the following operations to upload the project data.

(The following example is when selecting **MICRO/I, Smart AXIS Touch** for **Communication with,** and **COM Port** or **USB** for **Port**)

1. Select **Upload - Project** from the menu bar.
  2. The Downloader displays the **Upload Project** dialog box. Check the box of data you want to upload at the same time.
  3. Specify the folder to save the uploading project data. Then click **OK** button.
  4. The Downloader begins to upload and displays the progress indicator.
  5. When finishing the upload, click **Close** button.
- ▶ When uploading the project data only, upload without opening the box.
  - ▶ When you set the password to the user name to which the Administrator Group is allocated in the communicating MICRO/I, Touch, the Downloader displays the **Enter Password** dialog box.  
Enter the password to this user name.  
Entering the correct password made the Downloader continue to upload.
  - ▶ The project uploaded by the Downloader is the "Project for Downloader" If you want to open and edit this file in the WindO/I-NV2, WindO/I-NV3, select **Application menu**  - **Open - Other Formats** from the menu.

## 6-5 Uploading Log Data

---

The Downloader can upload Data Log, Alarm Log and Alarm Log stored in the memory of the MICRO/I, Touch at same time or separately.

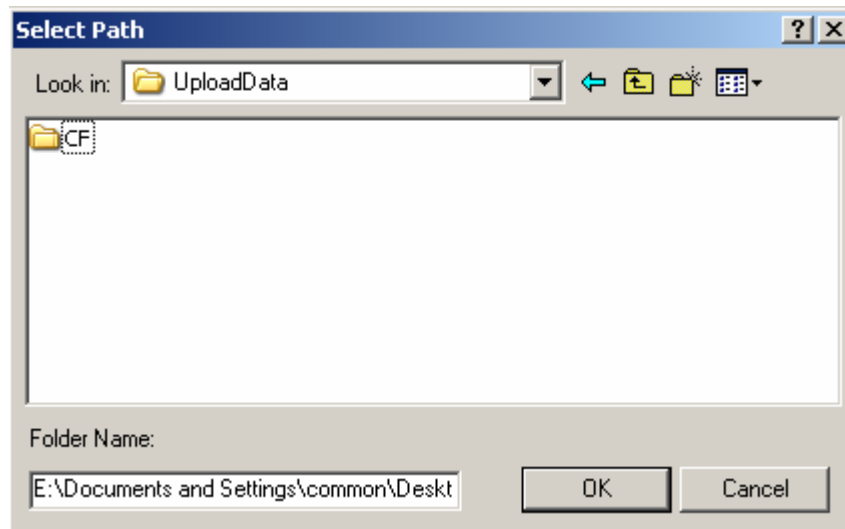
When selecting **O/I Link Slaves** and **Ethernet**, the Downloader can upload log data stored in one or more MICRO/I, Touch units at same time.

Use the following operations to upload the log data.

- **Uploading All Log Data**

(The following example is when selecting **MICRO/I, Smart AXIS Touch** for **Communication with**, and **COM Port** or **USB** for **Port**)

1. Select **Upload - All Log Data...** from the menu bar.
2. The **Select Path** dialog box appears. Specify the folder in which the uploaded data files are saved. Then click **OK** button.



3. The Downloader begins to upload and displays the progress indicator.
  4. When finishing the upload, click **Close** button.
- ▶ When you set the password to the user name to which the Reader Group is allocated in the communicating MICRO/I, Touch, the Downloader displays the **Enter Password** dialog box. Enter the password to this user name or to the user name to which the Administrator Group or the Operator Group is allocated. Entering the correct password made the Downloader continue to upload. However, it is not necessary to enter the user name, when the runtime software version is 1.90 or earlier.
  - ▶ When uploading either Alarm Log data, Data Log data or Operation Log Data, select **Upload - Alarm Log Data...**, **Upload - Data Log Data...** or **Operation Log Data...** from the menu bar in the step 1. Further steps are the same as above.

### Procedure differences according to the communication setting

Applicable operating procedures at the beginning of the communication depend on the setting.

When selecting **MICRO/I, Smart AXIS Touch** for **Communicate with**, and **Ethernet** for **Port**

1. The Downloader opens the **Target IP Address** dialog box.
2. Specify the target IP address and then click **OK** button.

3. The Downloader begins to upload.
4. The Downloader saves uploaded data into the folder after which the IP address number is named.

When selecting **O/I Link Slaves** for **Communicate with**

1. The Downloader opens the **Target Slaves** dialog box.
2. Select the target slaves, and then click **OK** button.
- ⇒ Only when selecting **Ethernet** for **Port**, the Downloader displays **Master IP Address** and “...” button on the edit box. Specify the target IP address here
3. The Downloader begins to upload.
4. The Downloader saves uploaded data in the folder after which the slave number is named.

## 6-6 Clearing Log Data

---

The Downloader can initialize logging data and alarm data stored in the memory of the MICRO/I, Touch at same time or separately.

And it can initialize

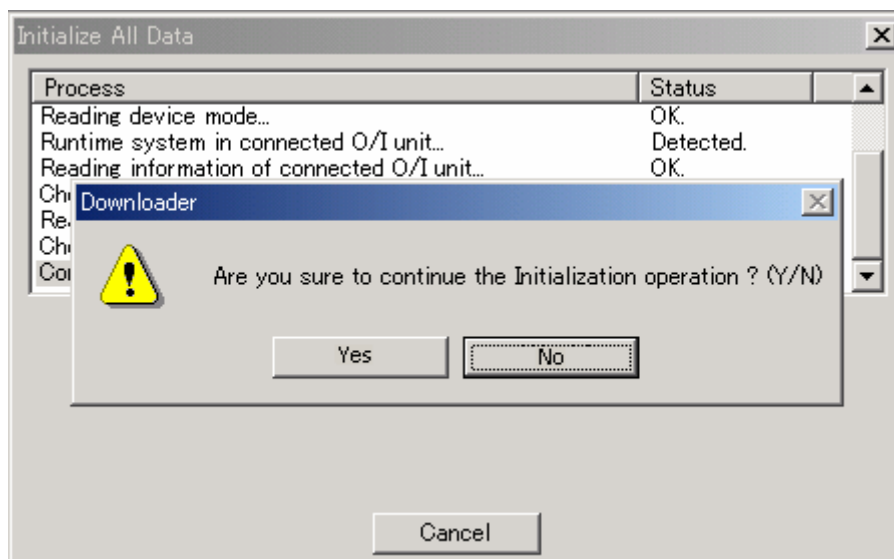
When selecting **O/I Link Slaves** and **Ethernet**, the Downloader can initialize log data stored in one or more MICRO/I, Touch units at same time.

Use the following operations to initialize log data.

- **Initializing All Log Data**

(The following example is when selecting **MICRO/I, Smart AXIS Touch** for **Communication with**, and **COM Port** or **USB** for **Port**.)

1. Select **Clear - All Log Data...** from the menu bar.
2. Click **Yes** button to authorize the confirmation message for the clearing.



3. The Downloader begins to initialize and displays the progress indicator.
4. After finishing the clearing, click **Close** button.

- ▶ When clearing either Alarm Log Data, Data Log Data or Operation Log Data, select **Alarm Log Data...**, **Data Log Data...** or **Operation Log data** individually from **Clear** in the menu bar in the step 1. Further steps are the same as above.
- ▶ When you set the password to the user name to which the Administrator Group is allocated in the communicating MICRO/I, Touch, the Downloader displays the **Enter Password** dialog box.  
Enter the password to this user name.  
Entering the correct password made the Downloader continue to initialize.  
However, it is not necessary to select the user name, when the runtime software version is 1.90 or earlier.

## Procedure differences according to the communication setting

Applicable operating procedures at the beginning of the communication depend on the setting.

When selecting **MICRO/I, Smart AXIS Touch** for **Communicate with**, and **Ethernet** for **Port**

1. The Downloader opens the **Target IP Address** dialog box.
2. Specify the target IP address, and then click **OK** button.
3. The Downloader begins to initialize.

When selecting **O/I Slave Link** for **Communicate with**

1. The Downloader opens the **Target Slaves** dialog box.
2. Select the target slave and then click **OK** button.
- ⇒ Only when selecting **Ethernet** for **Port**, the Downloader displays the **Master IP Address** and "... " button on the edit box. Specify the target IP address here.
3. The Downloader begins to initialize.

## 6-7 External Memory Maintenance

---

The Downloader can do maintenance for the data in the External Memory inserted into the MICRO/I, Touch.

When selecting **O/I Link Slaves** and **Ethernet**, the Downloader can do maintenance for the External Memory inserted in one or more MICRO/I, Touch units at same time.

The Downloader do maintenance targeting the data in the External Memory access folder set on the working project in the MICRO/I, Touch.

The maintenance consists of following six items.

- The download of project data  
The Downloader downloads project data to the External Memory.
- The download of files  
The Downloader downloads recipe data (RCP###.CSV), picture data, sound data, PLC program data, Movie File List and movie data into the corresponding folders in the External Memory.
- The download of files while running  
The Downloader downloads recipe data, picture data, sound data, PLC program data, Movie File List and movie data without stopping the MICRO/I, Touch's operation.
- The upload  
The Downloader uploads log data, logging data, recipe data, screen hard copy data, picture data, sound data, PLC program data, Movie File List and movie data in the External Memory to anywhere in the personal computer.
- The clearing  
The Downloader clears (deletes) log data, logging data, recipe data, screen hard copy data, project data, PLC program data, Movie File List and movie data in the External Memory.
- The formatting  
The Downloader formats the External Memory.

Use the following operations to do maintenance for the External Memory.  
(The following example is when selecting **MICRO/I, Smart AXIS Touch for Communicate with**, and **COM Port** or **USB for Port**.)

- **Downloading Project Data**

1. Select **External Memory Maintenance - Download Project** from the menu bar.
  2. The Downloader displays the **Open** dialog box. Select project data to download and click **Open** button.
  3. Click **OK** button to authorize the confirmation message.
  4. The Downloader begins to download and displays the progress indicator.
  5. After finishing the download, click **Close** button.
- ▶ When you set the password to the user name to which the Operator Group is allocated in the communicating MICRO/I, Touch, the Downloader displays the **Enter Password** dialog box.  
Enter the password to this user name or to the user name to which the Administrator Group is allocated.  
Entering the correct password made the Downloader continue to download.
  - ▶ When you download the Project Data to External Memory, the Project Data must contain runtime software and optional font.  
Select the Project Data which contains runtime software and optional font to download.

- **Downloading files**

1. Select **External Memory Maintenance - Download Files to External Memory...** from the menu bar.
  2. The Downloader displays the **Open** dialog box. Select the recipe data file for the download and click **Open** button.
  3. Click **OK** button to authorize the confirmation message.
  4. The Downloader begins to download and displays the progress indicator.
  5. After finishing the download, click **Close** button.
- ▶ When you set the password to the user name to which the Administrator Group is allocated in the communicating MICRO/I, Touch, the Downloader displays the **Enter Password** dialog box.  
Enter the password to this user name.  
Entering the correct password made the Downloader continue to initialize.  
However, it is not necessary to select the user name, when the runtime software version is 1.90 or earlier.

- **Downloading Files to External Memory while Running**

1. Select **External Memory Maintenance - Download Files to External Memory while running** from the menu bar.
  2. Further steps are the same as the download.
- ▶ When you set the password to the user name to which the Operator Group is allocated in the communicating MICRO/I, Touch, the Downloader displays the **Enter Password** dialog box.  
Enter the password to this user name or to the user name to which the Administrator Group is allocated.  
Entering the correct password made the Downloader continue to download.
  - ▶ When you set **O/I Link Slaves to Communication with** in the Communication Settings, you can not download recipe data while running.

- **Uploading Data in External Memory**

1. Select **External Memory Maintenance – Upload...** from the menu bar.
2. The Downloader displays the **Upload Data from External Memory** dialog box. Check the box of data you want to upload.
3. Click “...” button to select the folder for saving the uploaded data file. Then click **OK**



button.

4. Click **Yes** button to authorize the confirmation message for uploading.
5. The Downloader begins to upload and displays the progress indicator.
6. After finishing the upload, click **Close** button.

- ▶ When you set the password to the user name to which the Reader Group is allocated in the communicating MICRO/I, Touch, the Downloader displays the **Enter Password** dialog box. Enter the password to this user name or to the user name to which the Administrator Group or the Operator Group is allocated.  
Entering the correct password made the Downloader continue to upload.  
However, it is not necessary to enter the user name, when the runtime software version is 1.90 or earlier.

### ● **Clearing Data in External Memory**

1. Select **External Memory Maintenance – Clear...** from the menu bar.
2. The Downloader displays the **Clear Data** dialog box. Check the box of data you want to delete and then click **OK** button.
3. Click **Yes** button to authorize the confirmation message for initializing.
4. The Downloader begins to initialize and displays the progress indicator.
5. After finishing the initialization, click **Close** button.

- ▶ When you set the password to the user name to which the Administrator Group is allocated in the communicating MICRO/I, Touch, the Downloader displays the **Enter Password** dialog box.  
Enter the password to this user name.  
Entering the correct password made the Downloader continue to initialize.  
However, it is not necessary to select the user name, when the runtime software version is 1.90 or earlier.

### ● **Formatting External Memory**

1. Select **External Memory Maintenance - Format** from the menu bar.
2. Click **Yes** button to authorize the confirmation message for formatting.
3. The Downloader begins to format and displays the progress indicator.
4. After finishing the format, click **Close** button.

- ▶ When setting the password to the project in the MICRO/I, the Downloader displays the **Enter Password** dialog box. After entering the password, click **OK** button.
- ▶ When you set the password to the user name to which the Administrator Group is allocated in the communicating MICRO/I, the Downloader displays the **Enter Password** dialog box.  
Enter the password to this user name.  
Entering the correct password made the Downloader continue to format.  
However, it is not necessary to select the user name, when the runtime software version is 1.90 or earlier.

## **Procedure differences according to the communication setting**

Applicable operating procedures at the beginning of the communication depend on the setting.

When selecting **MICRO/I, Smart AXIS Touch** for **Communication with**, and **Ethernet** for **Port**.

1. The Downloader opens the **Target IP Address** dialog box.
2. Specify the target IP address and click **OK** button.
3. The Downloader begins to communicate.

When selecting **O/I Link Slaves** for **Communication with**

1. The Downloader opens the **Target Slaves** dialog box.
2. Select target slaves and click **OK** button.
- ⇒ Only when selecting **Ethernet** for **Port**, the Downloader displays the **Master IP Address** and “...” button on the edit box. Specify **Target IP Address** here.
3. The Downloader begins to communicate.

## 6-8 Change Picture Data

---

The Downloader can change only Picture Data with opening project data for Downloader or uploading the Picture Data from MICRO/I.

The change of Picture Data is done with Picture Manager.

When Picture file of the same name as the already registered Picture is imported, the image is overwritten.

The importable Picture file is BMP, WMF, DXF, JPEG and ICO.

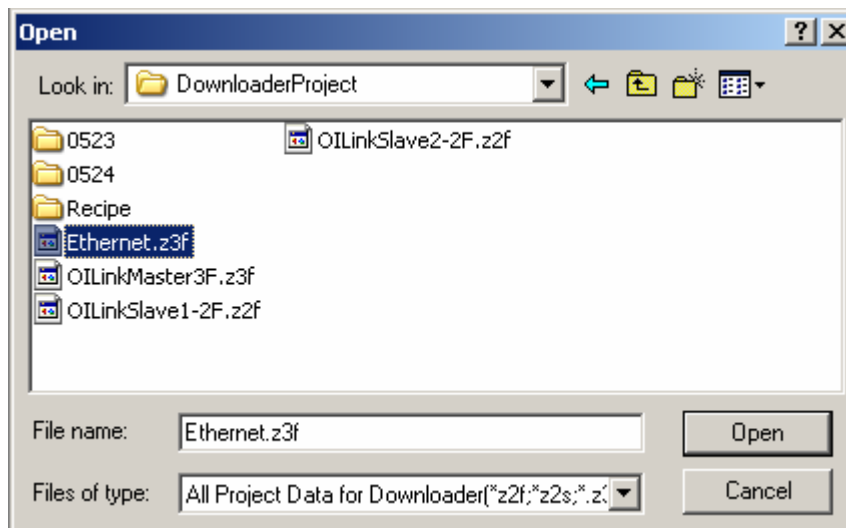
Use the following operations to change Picture Data.

This function is not available in the case of HG2G-5F/HG3G/HG4G/Touch. For changing the picture data in HG3G/HG4G, select **External Memory Maintenance - Download Files to External Memory...** from the menu bar.

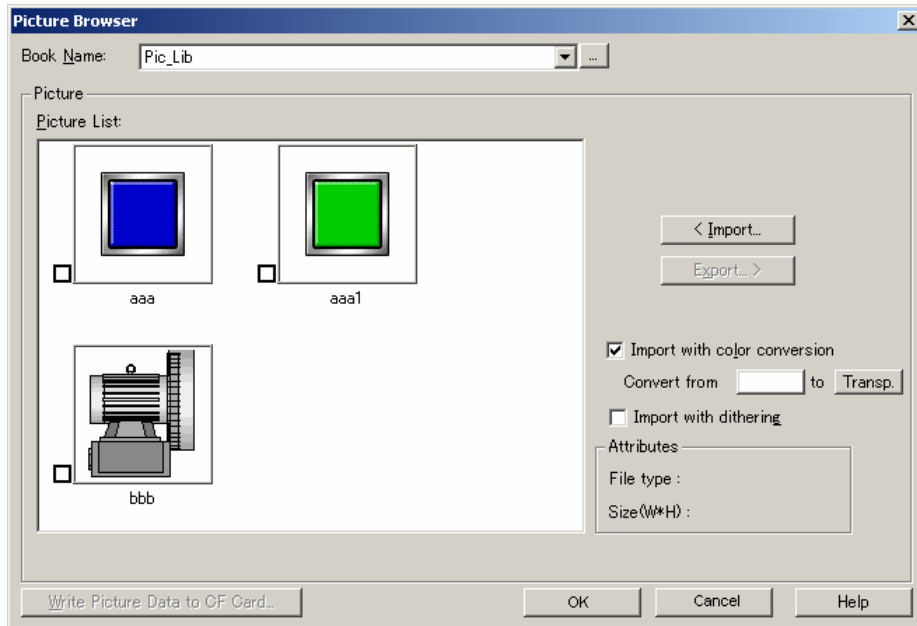
- **Change Picture in Project Data for Downloader**

(The following example is when selecting **MICRO/I, Smart AXIS Touch** for **Communication with**, and **COM Port** or **USB** for **Port**.)

1. Select **Options – Change Picture Data – Picture in Project Data for Downloader** from the menu bar.
2. Select the project data file for the Downloader on the **Open** dialog box and then click **Open** button.



3. Change Picture Data on the opened **Picture Manager**.



**Book Name:** The images displayed in Picture List change according to the Book selected by you.  
**Import:** Select Picture that you want to change on **Open** dialog box.  
 File name of Picture file specified by you must be same as the already registered Picture Name in Picture List.

If the size of the changed image is different from the original image, it may be displayed with the different image because the image is resized on the screen of MICRO/I automatically.

**Export:** Export the Picture selected by you in Picture List with converting to bitmap file.  
 Change the image with importing the bitmap file after editing the exported bitmap file on **Microsoft Paint** etc.

**Import with color conversion:**  
 When this check box is selected, you can convert the specified color to the specified color while importing the image. You can specify the original color and the destination color. You can choose the destination color as transparent too.

**Import with dithering:**  
 When this check box is selected, dithering is performed on the file when it is registered. Dithering can ensure that graphics with tone gradations and photographs are registered so that they remain attractive to look at.

**Attributes:** Display the attributes of the image selected in the image list.

**File Type:** Display the type of the registered file.

**Size(W\*H):** Display the file size.

**Write Picture Data to External Memory:**  
 Save all picture data you selected to the External Memory as one-file.

4. Click **OK** button to start the downloading the changed Picture data.
5. The Downloader begins to download and displays the progress indicator. The communication conditions in this instance are the one you set in **Options - Communication Settings...**
6. When the project data size exceeds the downloadable size while downloading the changed Picture data, error message is displayed.
7. After finishing the download, click **Close** button.

- **Change Picture uploaded from HG**

(The following example is when selecting **MICRO/I, Smart AXIS Touch** for **Communication with,** and **COM Port** or **USB** for **Port.**)

1. Select **Options – Change Picture Data – Picture uploaded from HG** from the menu bar.
  2. Select the project data file for the Downloader on the **Open** dialog box and then click **Open** button.
  3. The Downloader begins to upload and displays the progress indicator.
  4. After finishing the upload, you can change Picture on the opened **Picture Browser**. For **Picture Manager**, refer to “**Change Picture in Project Data for Downloader**”.
  5. Click **OK** button to start the downloading the changed Picture data.
  6. The Downloader begins to download and displays the progress indicator. The communication conditions in this instance are the one you set in **Options - Communication Settings...**
  7. When the project data size exceeds the downloadable size while downloading the changed Picture data, error message is displayed.
  8. After finishing the download, click **Close** button.
- ▶ When you set the password to the user name to which the Administrator Group is allocated in the communicating MICRO/I, the Downloader displays the **Enter Password** dialog box. Enter the password to this user name. Entering the correct password made the Downloader continue to next step.

## **Procedure differences according to the communication setting**

Applicable operating procedures at the beginning of the communication depend on the setting.

When selecting **MICRO/I, Smart AXIS Touch** for **Communicate with,** and **Ethernet** for **Port**

1. The Downloader opens the **Target IP Address** dialog box.
2. Click **OK** button to specify the target IP address.
3. The Downloader begins the communication.

When selecting **O/I Link Slaves** for **Communicate with**

4. The Downloader opens the **Target Slaves** dialog box.
  5. Select target slaves and click **OK** button.
- ⇒ Only when selecting **Ethernet** for **Port**, the Downloader displays the **Master IP Address** and “...” button on the edit box. Specify the target IP address here.
6. The Downloader begins to download.

## **6-9 Change Text Data**

---

The Downloader can change only Text Data with opening project data for Downloader or uploading the Text Data from MICRO/I, Touch.

The change of Text Data is done with Text Manager.

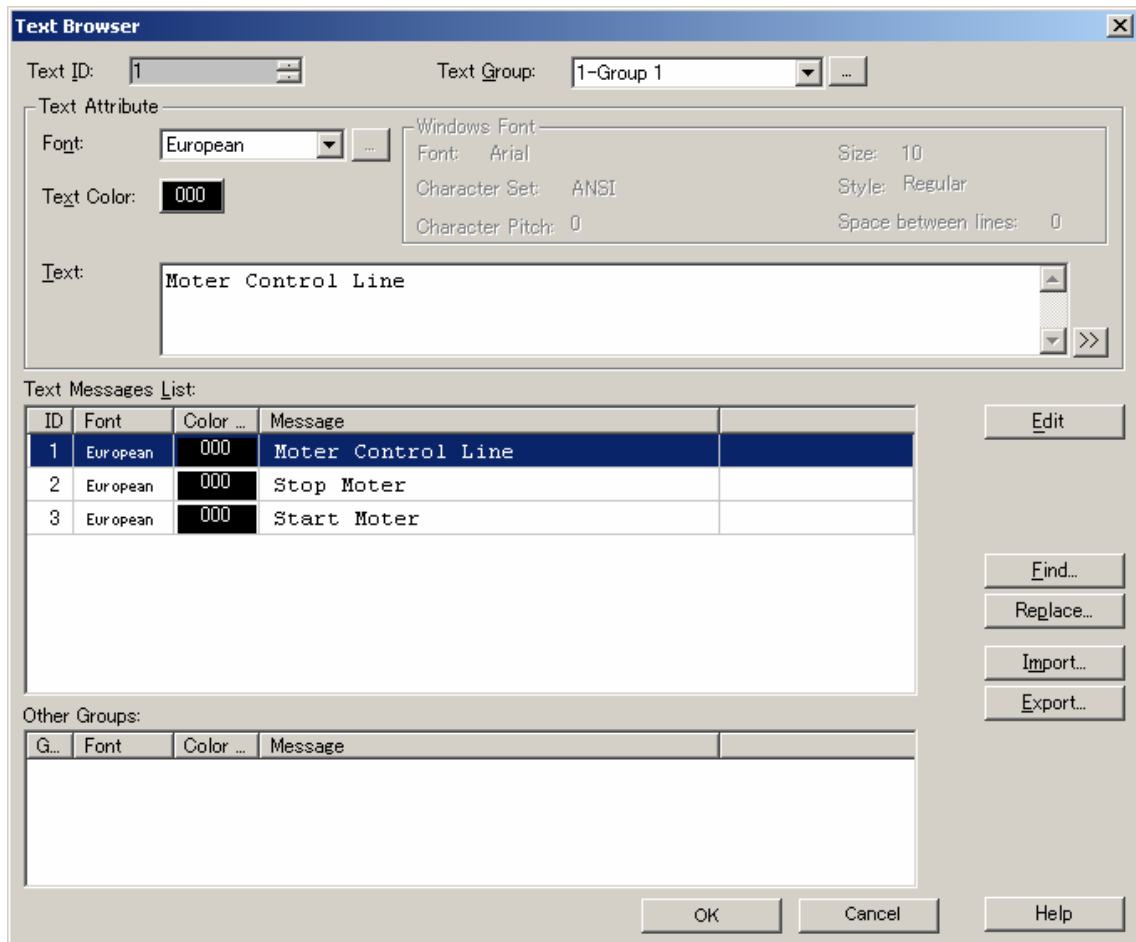
You can change Text Data with clicking **Edit** button after changing the text of the already registered Text ID.

Use the following operations to change Text Data.

- **Change Text in Project Data for Downloader**

(The following example is when selecting **MICRO/I, Smart AXIS Touch** for **Communication with,** and **COM Port** or **USB** for **Port.**)

1. Select **Options – Change Text Data – Text in Project Data for Downloader** from the menu bar.
2. Select the project data file for the Downloader on the **Open** dialog box and then click **Open** button.
3. Change Text Data on the opened **Text Manager**.



- Text ID:** The ID of the selected text in Text Message List is displayed.
- Text Group:** The texts displayed in Text Message List change according to the Text Group selected by you.
- Text Attribute:** You can change not only Text but also Font or Text Color. Input characters of text up to 3750. To input a special character or symbol, click the [>>] button to invoke **Unicode Input** dialog box.
- Text Message List:** Display the registered Text in Text Manager. In the case of multiple lines of text, “\n” represents a carriage return.
- Edit:** Change the text of Text ID selected in Text Message List to Font, Text Color and Text displayed in Text Attribute.
- Find:** Searches for a specified text string in the Text Message List.
- Replace:** Replaces a specified text string in the Text Message List.
- Import:** You can change current text settings by importing text settings list. When you change Text, recommend to export the text registered in **Text Manager** then change the exported text then import the changed text. The file extension for the Text Setting List file is \*.txt and \*.csv. The Text Setting List file includes the Text ID, font, text but only the font and text are read. While reading, font name should be matched font list name. Using Unicode format, you can handle multiple languages with Unicode applicable applications, like Excel or editors.
- Export:** You can export the current text settings list to the file. You can write the content set using the Text Manager to a CSV-format file (delimiter is comma or semicolon) or tab delimited Unicode text. The file extension is \*.csv or

\*.txt.

Using Unicode format, you can see or edit multiple languages with Unicode applicable applications, like Excel or editors.

4. Click **OK** button to start the downloading the changed Text data.
5. The Downloader begins to download and displays the progress indicator. The communication conditions in this instance are the one you set in **Options - Communication Settings...**
6. When the project data size exceeds the downloadable size while downloading the changed Text data, error message is displayed.
7. After finishing the download, click **Close** button.

### • **Change Text uploaded from HG, Touch**

(The following example is when selecting **MICRO/I, Smart AXIS Touch** for **Communication with**, and **COM Port** or **USB** for **Port**.)

1. Select **Options – Change Text Data – Text uploaded from HG** from the menu bar.
2. Select the project data file for the Downloader on the **Open** dialog box and then click **Open** button.
3. The Downloader begins to upload and displays the progress indicator.
4. After finishing the upload, you can change Text on the opened **Text Manager**. For **Text Manager**, refer to “**Change Text in Project Data for Downloader**”.
5. Click **OK** button to start the downloading the changed Text data.
6. The Downloader begins to download and displays the progress indicator. The communication conditions in this instance are the one you set in **Options - Communication Settings...**
7. When the project data size exceeds the downloadable size while downloading the changed Text data, error message is displayed.
8. After finishing the download, click **Close** button.

- ▶ When you set the password to the user name to which the Administrator Group is allocated in the communicating **MICRO/I, Touch**, the Downloader displays the **Enter Password** dialog box.

Enter the password to this user name.

Entering the correct password made the Downloader continue to next step.

### **Procedure differences according to the communication setting**

Applicable operating procedures at the beginning of the communication depend on the setting.

When selecting **MICRO/I, Smart AXIS Touch** for **Communicate with**, and **Ethernet** for **Port**

1. The Downloader opens the **Target IP Address** dialog box.
2. Click **OK** button to specify the target IP address.
3. The Downloader begins the communication.

When selecting **O/I Link Slaves** for **Communicate with**

4. The Downloader opens the **Target Slaves** dialog box.
5. Select target slaves and click **OK** button.

- ⇒ Only when selecting **Ethernet** for **Port**, the Downloader displays the **Master IP Address** and “...” button on the edit box. Specify the target IP address here.

6. The Downloader begins to download.

## 6-10 Read Device Data

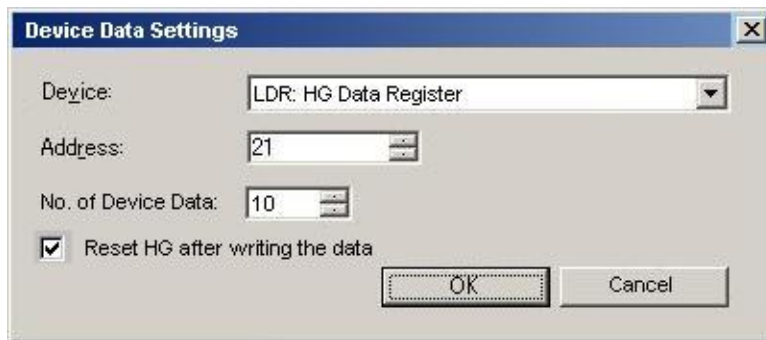
---

The Downloader can read the data stored in the specified Device Address and can save the data with CSV file format.

Use the following operations to read Device Data.

(The following example is when selecting **MICRO/I, Smart AXIS Touch** for **Communication with**, and **COM Port** or **USB** for **Port**)

1. Select **Option – Read Device Data...** from the menu bar.
2. The **Device Data Settings** dialog box appears. Specify the header address of Device Address and the number of data which you want to read. Then click **OK** button.



3. The **Save** dialog box appears. Specify the folder in which the read data files are saved. Then click **OK** button.
4. The Downloader begins to read Device Data and displays the progress indicator.
5. When finishing the reading, click **Close** button. The read data is saved with CSV file format.

- ▶ When you set the password to the user name to which the Reader Group is allocated in the communicating MICRO/I, Touch, the Downloader displays the **Enter Password** dialog box. Enter the password to this user name or to the user name to which the Administrator Group or the Operator Group is allocated. Entering the correct password made the Downloader continue to read Device Data.

### Procedure differences according to the communication setting

Applicable operating procedures at the beginning of the communication depend on the setting.

When selecting **MICRO/I, Smart AXIS Touch** for **Communicate with**, and **Ethernet** for **Port**

1. The Downloader opens the **Target IP Address** dialog box.
2. Specify the target IP address and then click **OK** button.
3. The Downloader begins to read Device Data.
4. The Downloader saves the read data into the folder after which the IP address number is named.

When selecting **O/I Link Slaves** for **Communicate with**      Not support

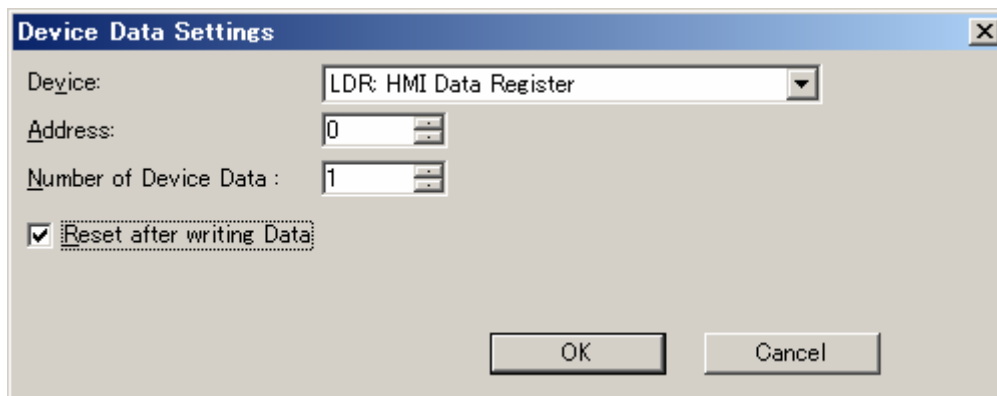
## 6-11 Write Device Data

---

The Downloader can write the data saved in CSV file to the specified Device Address. Use the following operations to write Device Data.

(The following example is when selecting **MICRO/I, Smart AXIS Touch** for **Communication with**, and **COM Port** or **USB** for **Port**)

1. Select **Option – Write Device Data...** from the menu bar.
2. The **Device Data Settings** dialog box appears. Specify the header address of Device Address and the number of data which you want to write. If you want to reset MICRO/I, Touch after writing Device Data, check the box of **Reset after writing the data**. Then click **OK** button.



3. The **Open** dialog box appears. Specify the file which Device Data is saved. Then click **Open** button.
  4. The Downloader begins to write Device Data and displays the progress indicator.
  5. When finishing the writing, click **Close** button.
  6. When **Reset after writing the data** check box is ON, MICRO/I, Touch is reset after writing the data. When the check box is OFF, it isn't reset.
- ▶ When you set the password to the user name to which the Operator Group is allocated in the communicating MICRO/I, Touch, the Downloader displays the **Enter Password** dialog box. Enter the password to this user name or to the user name to which the Administrator Group is allocated. Entering the correct password made the Downloader continue to write Device Data.

### Procedure differences according to the communication setting

Applicable operating procedures at the beginning of the communication depend on the setting.

When selecting **MICRO/I, Smart AXIS Touch** for **Communicate with**, and **Ethernet** for **Port**

1. The Downloader opens the **Target IP Address** dialog box.
2. Specify the target IP address and then click **OK** button.
3. The Downloader begins to write Device Data.

When selecting **O/I Link Slaves** for **Communicate with**      Not support



## 6-12 System Information

The system information enables you to confirm the runtime software information in the MICRO/I and the project information now downloading.

Use the following operation to confirm the system information.

(The following example is when selecting **MICRO/I, Smart AXIS Touch** for **Communication with**, and **Serial** or **USB** for **Port**.)

1. Select **Options - Target Information** from the menu bar.
2. The Downloader begins to communicate in no time and displays the project information.

**Target Information**

Target Runtime Information

Product Series: FT1A-C12RA-\*

Runtime Version: 3.73

Memory Space (byte): 5439488

Target Font Information... Target External Memory Information...

Target Project Information

Project Name: modbus3

Modified Date: Wednesday, February 20, 2013 8:51:13 AM

Project Version: 5.0011

PLC Manufacturer: Modicon

Protocol: MODBUS RTU - 1:N communication

Driver Version: 0.91

Opened Project Information

Project Name: Unknown

Modified Date: Unknown

Version Number: Unknown

OK

- ▶ At this time, clicking **Target Font Information** enable you to confirm the optional font information now downloaded in the MICRO/I.
- ▶ At this time, clicking **Target External Memory Information** enable you to confirm the status of the External Memory inserted into the MICRO/I, Touch.

### Procedure differences according to the communication setting

Applicable operating procedures at the beginning of the communication depend on the setting.

When selecting **MICRO/I, Smart AXIS Touch** for **Communicate with**, and **Ethernet** for **Port**.

1. The Downloader opens the **Target IP Address** dialog box.
2. Specify the target IP address, and then click **OK** button.
3. The Downloader begins to communicate.

When selecting **O/I Link Slaves** for **Communication with**

1. The Downloader opens the **Target Slaves** dialog box.
2. Select target slaves and click **OK** button.
- ⇒ Only when selecting **Ethernet** for **Port**, the Downloader displays **Master IP Address** and “...” button on the edit box. Specify **Target IP Address** here.
3. The Downloader begins to communicate.

## **6-13 Displaying Version Information**

---

Use the following procedure to display the version information for the Downloader.

1. Select **Help - About** from the menu bar.
2. The Downloader displays the **About Downloader** dialog box.

## 7 Formatting Log Data

---

Uploading log data - Alarm Log Data, Data Log Data and Operation Log Data - enable you to save the CSV file into the specified folder.

HG2G-5F/HG3G/HG4G/Touch: The respective log data are saved as the specified name in WindO/I-NV2, WindO/I-NV3.

HG2G/S/HG3F/HG4F: The respective log data are saved as below.

Alarm Log Data: ALMHT.CSV

Data Log Data: LOG##.CSV

(## is Channel No. in Data Log Settings)

Operation Log Data: OPLOG.CSV

For the format of each log data file, please refer WindO/I-NV2, Touch Users Manual.


# 8 Download Options

---

It is explained here how to download the runtime software and the optional font at the same time in downloading the project. These settings are done when making project data for the Downloader not in the Downloader but in the WindO/I-NV2, WindO/I-NV3.

Use the following operations to set download options.

(The following example is when selecting **MICRO/I, Smart AXIS Touch** for **Communication with**, and **COM Port** or **USB** for **Port**.)

1. Select  - **Save AS...** - **Other Formats** from the menu of the WindO/I-NV2, WindO/I-NV3.
  2. Click **Options...** on the **Save As Project Data for Downloader** dialog box.
  3. After displaying the **Option** dialog box, select the information you want to add.
  4. When downloading the runtime software, check the box of **Download Runtime system**.
  5. When downloading the optional font, check the box of **Download additional fonts**. Then check the box of font you want to download.
- ⇒ At this time, if the Downloader can communicate with the MICRO/I, Touch, clicking **Target Font Information** enables you to confirm the font information in the MICRO/I, Touch.
6. Clicking **OK** button will terminate the setting. However, if you check the box in the step 4., the Downloader displays the confirmation message whether you want to download the runtime software compulsorily or not. At this time, select **Yes** button.
  7. Clicking **Download** button enables you to open the **Save As Project Data for Downloader** dialog box. Then specify the place or the folder to save the data and click **Save** button.
  8. Click **Yes** button to authorize the confirmation message for formatting.
  9. The Downloader begins to format and displays the progress indicator.
  10. After finishing the format, click **Close** button.

## Procedure differences according to the communication setting

Applicable operating procedures at the beginning of the communication depend on the setting.

When selecting the **MICRO/I, Smart AXIS Touch** for the **Communication with** and **Ethernet** for **Port**.

1. The Downloader opens the **Target IP Address** dialog box.
2. Specify the target IP address and then click **OK** button.
3. The Downloader begins to download.

When selecting **O/I Link Slaves** for **Communication with**

1. The Downloader opens the **Target Slaves** dialog box.
  2. Select the target slaves and then click **OK** button.
- ⇒ Only when selecting **Ethernet** for **Port**, the Downloader displays the **Master IP Address** and "... " button on the edit box. Specify the target IP address here.
3. The Downloader begins to download.

**Caution:** When turning the box of **Download Runtime system** off, the Downloader does not download the runtime software. On this account, if the version of following two software is not equal, you cannot download the project.

1. The runtime software loaded in the WindO/I-NV2, WindO/I-NV3 on which the project is made
2. The runtime software downloaded to the MICRO/I, Touch for which the download is targeted.

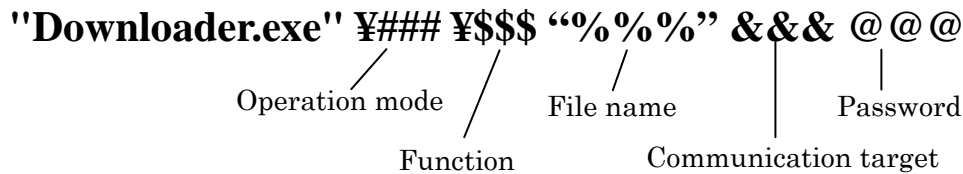
**Caution:** The additional fonts in MICRO/I, Touch are updated by the selected fonts on Option dialog box when the font data is downloaded with the project data. Then not selected fonts are removed.

**Caution:** When you download the Project Data to External Memory, the Project data must contain runtime software and optional font.  
When you make a Project Data to download, check the box of **Download Runtime system** and **Download additional fonts**.

# 9 Utilizing from Another Software

The Downloader enables you to utilize the function of the Downloader from another software. Executing the executable file for the Downloader through command line, attaching the parameter corresponding to each Downloader's function, enables you to perform various types of Downloader's functions.

Command line combines two or more command and makes Downloader function. The format of the command line is as follows.



It explains each function here.

## Operation mode

**"Downloader.exe" ¥### ¥\$\$\$ “%%%" &&& @@@**

It is an Operation type when the Downloader executes commands.

The command line has two types of modes

Types	Parameter	
Normal mode	¥normal	The Downloader executes commands showing only the dialog boxes of each functions or messages instead of the main window.
Silent mode	¥silent	The Downloader executes only commands without any showing of dialog boxes and messages. At this time, the Downloader records messages or statuses shown through the normal commanding procedure to the log file, and creates as a file in the folder in which the Downloader is installed. The Downloader overwrites this log file whenever communicating. After completing the communication, complete.flg file is yielded. You can identify the completion of the communication with the file. But this file is deleted automatically.

This parameter setting is indispensable

¥ must be put in front of [normal] or [silent].

## Function

**"Downloader.exe" ¥### ¥\$\$\$ “%%%" &&& @@@**

Executes Downloader's menu functions

For more information on each parameter, see the **9-1 functions**.

## File name

**"Downloader.exe" ¥### ¥\$\$\$ “%%%" &&& @@@**

Specifies the data file name or the folder for the download or the upload.

Specify the file name or the destination folder position by the absolute path.

Encloses the absolute path in double quotation(" ") of normal-width.

Function	Parameter	
When download	"C:¥USERDATA¥SamplePloject.z3f"	Specify the file name
When upload	"C:¥USERDATA¥uploaddata"	Specify the destination folder

		for upload
--	--	------------

The folder name or folder path inside “” is one example.

The parameter is unnecessary to specify the download file name or upload destination folder.

In this case, before communicating, a dialog box that specifies a file name or specifies upload destination folder is opened.

It is indispensable the parameter in the silent mode.

When you download the Recipe data, this parameter enables you to specify multiple files.

Separates each file with space.

Each file must be separated by a space of normal-width.

Also you can specify files using the wild card - \*.CSV, this enables you to download all file that exists in specified folder at a time.

## Communication target

“Downloader.exe” ¥### ¥\$\$\$ “%%%” &&& @@@

Specifies the target IP addresses and slave numbers.

The parameter depends on Communication port as follows.

Communication target	Communication port	Parameter	
MICRO/I, Smart AXIS Touch	COM	Unnecessary	The parameter is unnecessary.
	USB		
	Ethernet	192.168.1.15	Specify the target IP address Multiple targets are available.
	Ethernet (via Web Server Unit)	192.168.1.1. 2101	Specify the target IP address and Port No. Multiple targets are available.
O/I Link	COM	Slave1 Slave14 Slave15	Specify the target Slave No. Multiple targets are available.
	USB		
	Ethernet	Slave5 192.22.3.3 Slave10 22.125.1.1	Specify the target Slave No. and IP address. Multiple targets are available.
	Ethernet (via Web Server Unit)	Slave2 192.168.1.1.2101	Specify the target Slave No., IP address and Port No. (Space is unnecessary between IP address and Port No.) Multiple targets are available.
External Memory		CF	

The parameter is one example.

When Communication target is multiple, separate the parameter by a space of normal-width.

The parameter is unnecessary to specify the IP address and the slaves of target communication at any time in the dialog box. It is indispensable the parameter in the silent mode.

## Password

“Downloader.exe” ¥### ¥\$\$\$ “%%%” &&& @@@

When the connecting MICRO/I, Touch has a password setting, the Downloader checks the input password for the parameter automatically.

	Parameter	
Password	pass-@@@ (@@@: password)	Multiple passwords can be input. When multiple passwords are specified, separates the parameter by a space of normal-width.

When password is set to MICRO/I, Touch and the parameter is not set, the Enter Password dialog box is opened.

When the parameter is not correct, the Enter Password dialog box is opened. This is operation at a normal mode. The log of the error remains in the log file at the silent mode.

It is indispensable the parameter in the silent mode.

## 9-1 Function

It explains the parameter of the Function in detail.

“Downloader.exe” ¥### ¥\$\$\$ “%%” &&& @@@

### Download

Function	Parameter
Project Data for Downloader	¥download -P
Project Data for Downloader (Do not clear LKR and LK)	¥download -PK
Project Data for External Memory	¥download -C

### Upload

Function	Parameter
Project Data	¥upload -P
Project Data and Font Data	¥upload -PF
Project Data and Runtime	¥upload -PR
Project Data and Recipe Data in External Memory	¥upload -P -R
Project Data and Picture Data in External Memory	¥upload -P -C
Project Data and Sound Data in External Memory	¥upload -P -W
Multiple Data	
Project Data, Font Data and Runtime	¥upload -PRF
Project Data, Runtime and Recipe Data	¥upload -PR -R
Project Data, Runtime, Recipe Data, Picture Data, and Sound Data	¥upload -PR -R -C -W
All Log Data	¥upload -ALL
Alarm Log Data	¥upload -A
Data Log Data	¥upload -L
Operation Log Data	¥upload -OP

#### Example:

“Downloader.exe” ¥normal ¥upload -PF “C¥Administrator¥Downloader¥SampleProgram”

“Downloader.exe” ¥silent ¥upload -A “C¥Administrator¥Uploaddata” 192.233.5.15

“Downloader.exe” ¥silent ¥upload -A “C¥Administrator¥Uploaddata” Slave2 pass-1234

### Clear

Function	Parameter
All Log Data	¥initialize -ALL
Alarm Log Data	¥initialize -A
Data Log Data	¥initialize -L
Operation Log Data	¥initialize -OP
All Device Data	¥initialize -LK

In this Function, there is no parameter to specify File Name.

### External Memory Maintenance

Function	Parameter
Download	
Project Data	¥cf_download -P
Recipe Data	¥cf_download -R
Picture Data	¥cf_download -C
Sound Data	¥cf_download -W
PLC Program	¥cf_download -LD
Download Movie File List	¥cf_download -A
Download Movie Data	¥cf_download -M



Download while running	
Download Recipe Data while running	¥cf_download -U
Download Picture Data while running	¥cf_download -T
Download Sound Data while running	¥cf_download -X
Download PLC Program while running	¥cf_download -LR
Download Movie File List	¥cf_download -Y
Download Movie Data	¥cf_download -G

When “Communication with” is O/I Link Slaves in Communication Settings, you can not download recipe data while running. If you execute this command, it will be failed while communicating.

Upload	
Alarm Log Data	¥cf_upload -A
Data Log Data	¥cf_upload -L
Operation Log Data	¥cf_upload -OP
Recipe Data	¥cf_upload -R
Screen Hardcopy Data	¥cf_upload -S
Picture Data	¥cf_upload -C
Sound Data	¥cf_upload -W
PLC Program Data	¥cf_upload -LD
Movie File List	¥cf_upload -F
Movie Data	¥cf_upload -M
All Data	¥cf_upload -ALL
Multiple Data	
Alarm Log Data and Recipe Data	¥cf_upload -A-R

Clear	
Alarm Log Data	¥cf_initialize -A
Data Log Data	¥cf_initialize -L
Operation Log Data	¥cf_initialize -OP
Recipe Data	¥cf_initialize -R
Screen Hardcopy Data	¥cf_initialize -S
Project Data	¥cf_initialize -P
PLC Program Data	¥cf_initialize -LD
Movie Data	¥cf_initialize -M
Recorded Movie Data	¥cf_initialize -E
All Data	¥cf_initialize -ALL
Multiple Data	
Logging Data and Recipe Data	¥cf_initialize -L-R
Format	¥cf_format

In Initialize function, there is no parameter to specify File name.

#### Example:

“Downloader.exe” ¥normal ¥cf\_download -R “C:¥HGDATA01¥RECIPE¥RCP001.CSV RCP0012.CSV RCP0017.CSV”

“Downloader.exe” ¥normal ¥cf\_download -R “C:¥HGDATA01¥RECIPE¥\*.CSV” 192.168.22.3

“Downloader.exe” ¥normal ¥cf\_initialize -L-R Slave1 192.168.22.3 pass-ab12

### Option

Function	Parameter
Change Picture Data	
Picture in Project Data for Downloader	¥change_picture -P
Picture uploaded from MICRO/I	¥change_picture - U
Change Text Data	
Text in Project Data for Downloader	¥change_text -P
Text uploaded from MICRO/I	¥change_text - U
Read Device Data	¥read_[DDD]_NNN DDD: Device Address

	NNN: Number of Data
Write Device data	<pre> write_[DDD]_NNN -R DDD:   Device Address NNN:   Number of Data -R:    When don't reset MICRO/I,         this parameter isn't required. </pre>
System Settings	"Downloader.exe" %target &&&
Communication Settings	"Downloader.exe" %settings

**Example:**

"Downloader.exe" %normal %change\_picture -U

"Downloader.exe" %normal %change\_text -P "C:%WINDOINV2%Project1.z2f" 192.168.22.3

"Downloader.exe" %normal %read\_[LDR 20]\_30 "C:%WINDOINV2%ReadData.csv" Slave1 192.168.22.3  
pass-ab12

## 9-2 Use in Another Software

---

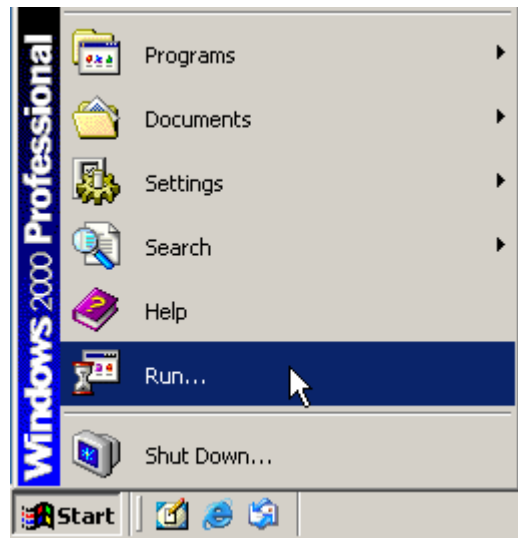
It explains concrete use in another software.

Software often used

- Run...
- Power Point
- Excel

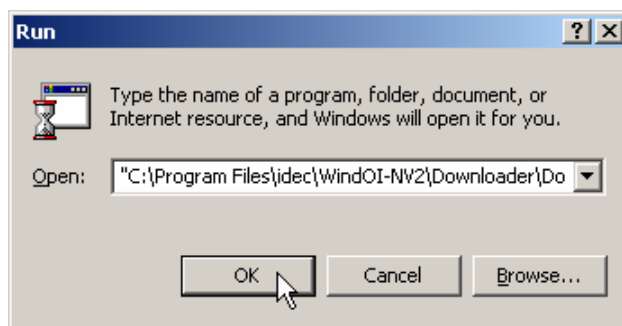
### 9-2-1 Using from Run...

- ① Starts Run... from Start menu of your PC



- ② Type the following command to the edit box of “Open” and click [OK] button.  
"C:\Program Files\idc\AutomationOrganizer\WindO/I-NV2\Downloader\Downloader.exe"  
normal download -P C:\Program Files\idc\WindO/I-NV2\Downloader\UserData  
sampleprojectz4f".

This command downloads "sampleprojectz4f" project data that exists in "C:\Program Files\idc\AutomationOrganizer\WindO/I-NV2\Downloader\UserData" in a Normal mode.



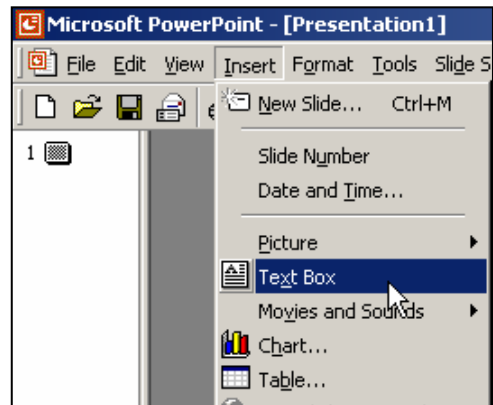
**Caution:** Start of the command, the path of "Downloader.exe" must be input the absolute path.

- ③ Download is executed.

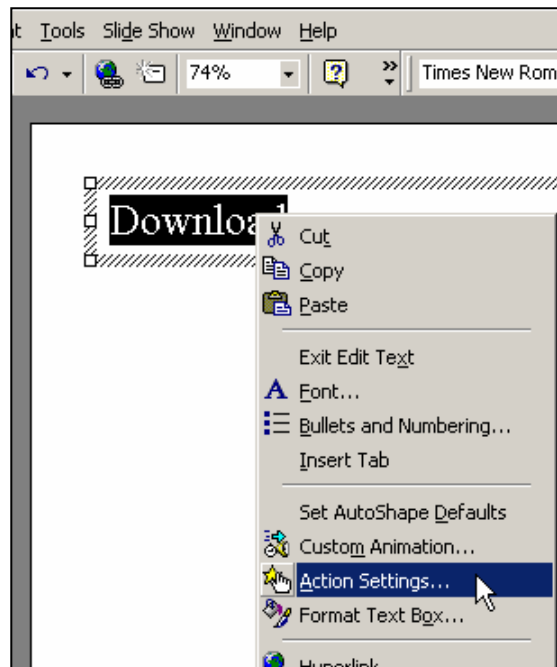
## 9-2-2 Using from Power Point

In Power Point, the command is executed by mouse clicking or passing over the character with mouse.

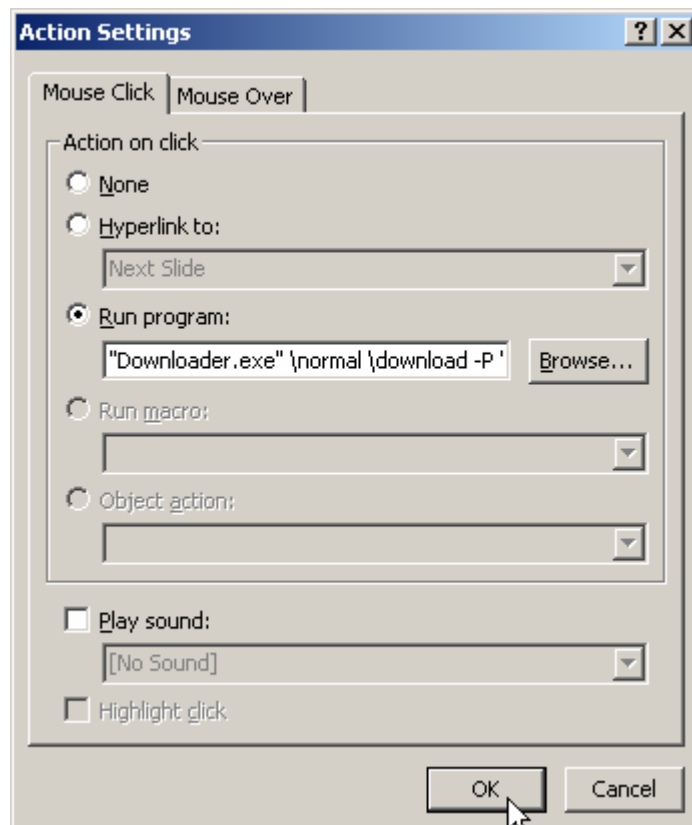
- ① Start Power Point
- ② Create new slide.
- ③ Select [Insert]-[Text Box] from the menu bar, and put a text box on the slide.



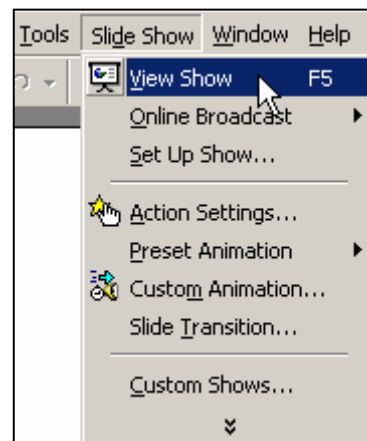
- ④ Type "Download" to the text box.
- ⑤ Select [Action Settings...] of Context menu. Then [Action Settings] dialog box opens.



- ⑥ Check [Run Program...] radio button and input the command to its edit box.  
(In this example, Mouse Click is trigger condition.)



- ⑦ Select [Slide Show]-[View Show] from the menu bar.

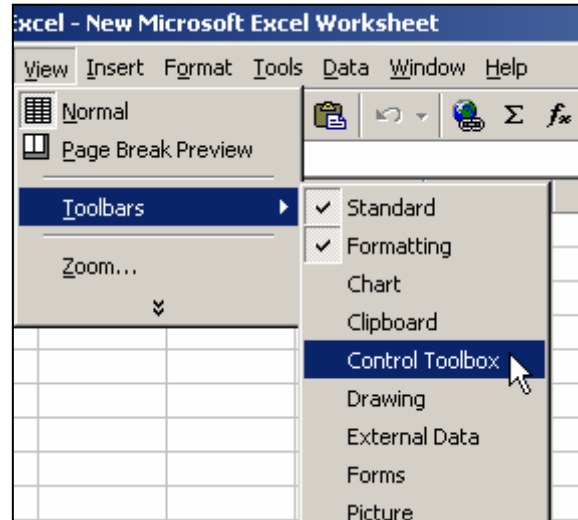


- ⑧ Click the character in slide show screen, and then command is executed.

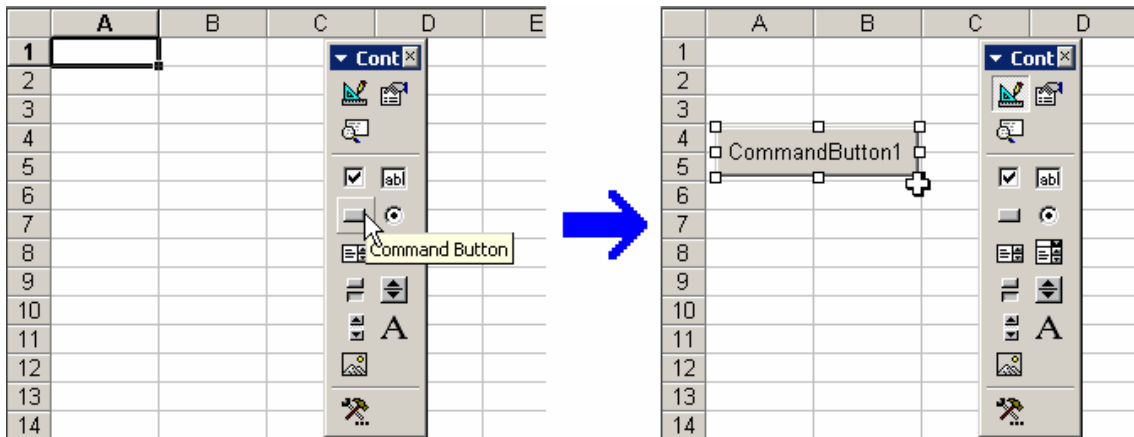
## 9-2-3 Using from Excel

In Excel, the command is executed with Macro for Visual Basic.

- ① Starting Excel.
- ② Select [View]-[Toolbars]-[Control Toolbox] from the menu bar.  
→[Control Toolbox] toolbar is displayed.



- ③ Select [Command Button], and then put a button on the screen.



- ④ Double clicking the[Command Button1]  
→Then Code window of Visual Basic opens.

- ▶ [Shell] function is used to starting another software( in here, it is Downloader) from Visual Basic.

**Shell (pathname [, windowstyle] )**

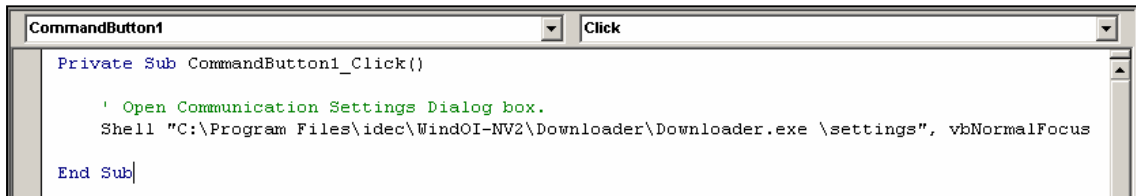
(In here,vbNormalFocus is used for windowstyle.)

- ⑤ Type the following code in procedure of [Private Sub CommandButton1\_Click()]

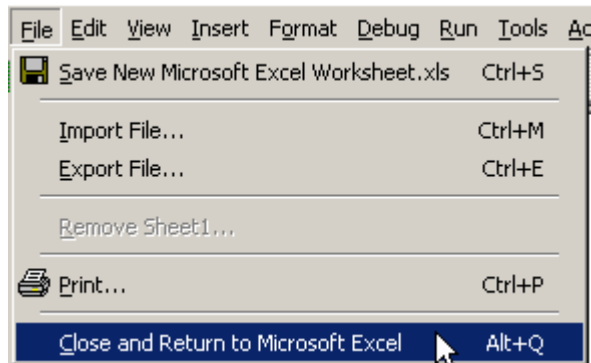
```
Private Sub CommandButton1_Click()

    ' Open Communication Settings dialog box.
    Shell "C:\Program Files\idec\WindOI-NV2\Downloader\Downloader.exe \settings", vbNormalFocus

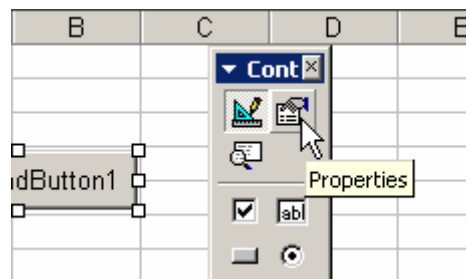
End Sub
```



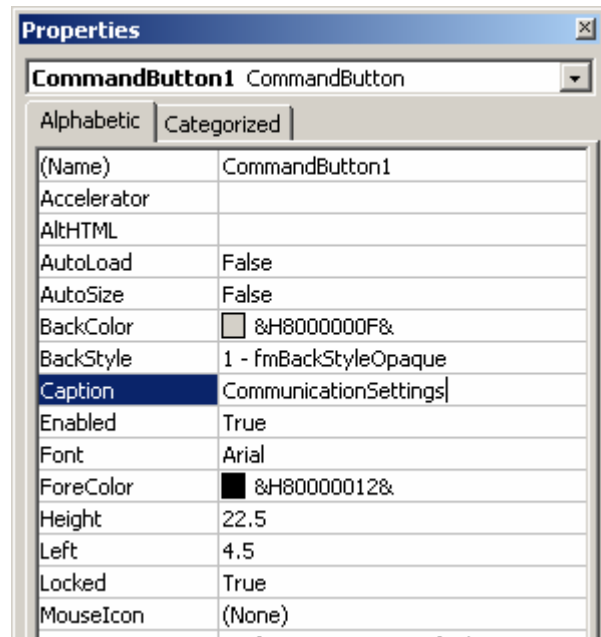
- ⑥ Click upper right [×] button of Code window or select [File]-[Close and Return to Microsoft Excel] from the menu bar.



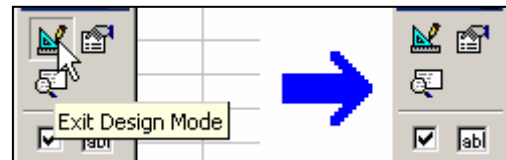
- ⑦ When [CommandButton1] is selected, click [Properties] button in the tool bar.  
→then Properties window opens.



- ⑧ Close the window after changing [Command Button1] of [Caption] to [Communication Settings]



- ⑨ Click [Exit Design Mode] button.



- ⑩ Click [Communication Settings] button, then the command is executed and Communication Settings dialog opens.