

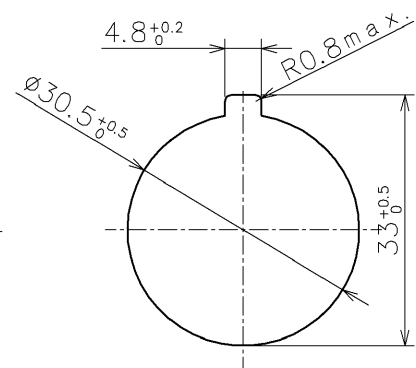
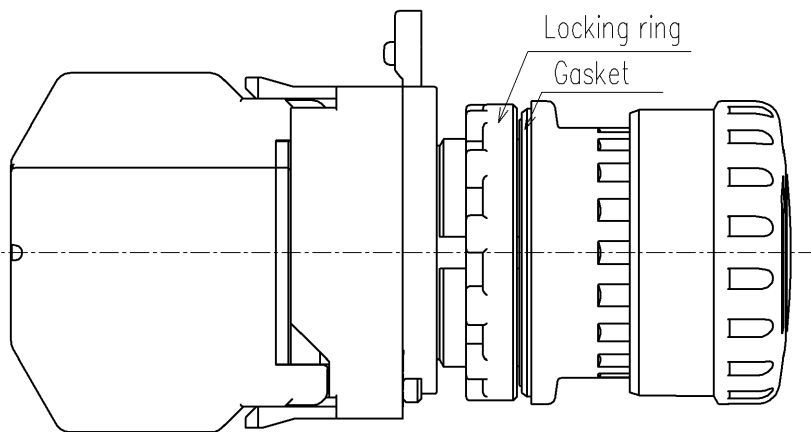
Operation type : Push-to-lock

Reset : Turn-to-reset, Pull-reset combined use

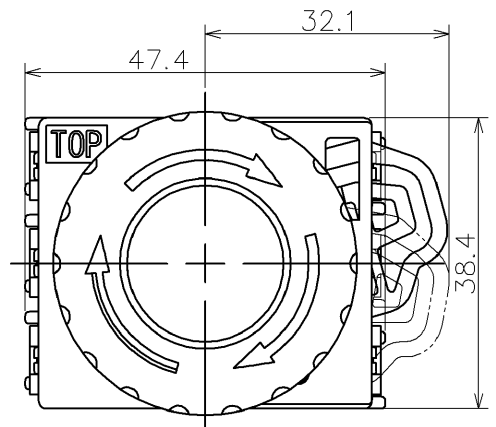
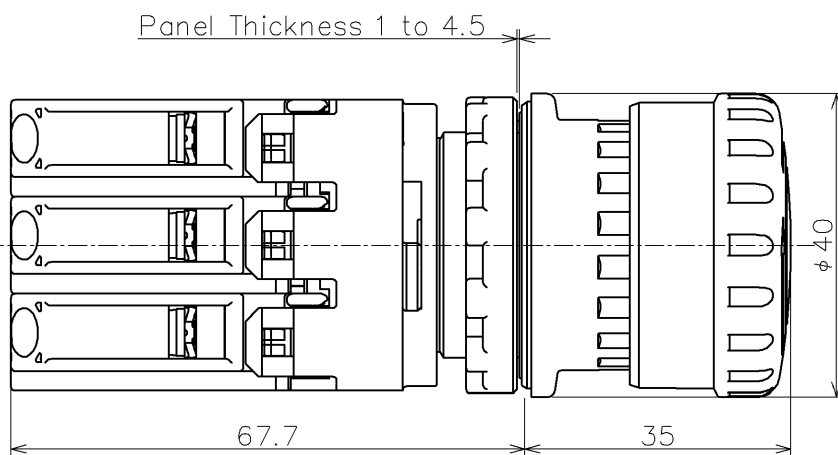
Contact arrangement(□□): 1b(01), 2b(02), 3b(03), 1a-1b(11), 1a-2b(12)

Button color : Red (R)

Degree of protection(Terminal): IP20



Panel Cut-Out



					Product Name: EU2B SERIES EMERGENCY STOP SWITCHES		
					Type Number: EU2B-YBV3□□FR		
Approved by		Y. Tsujioka		FEB.08,2024		Dim.: mm	Outside View
Checked by		A. Tsumura		FEB.08,2024			
Drawn by		F. Takai		FEB.08,2024		Drawing No. MA4-W00333C	