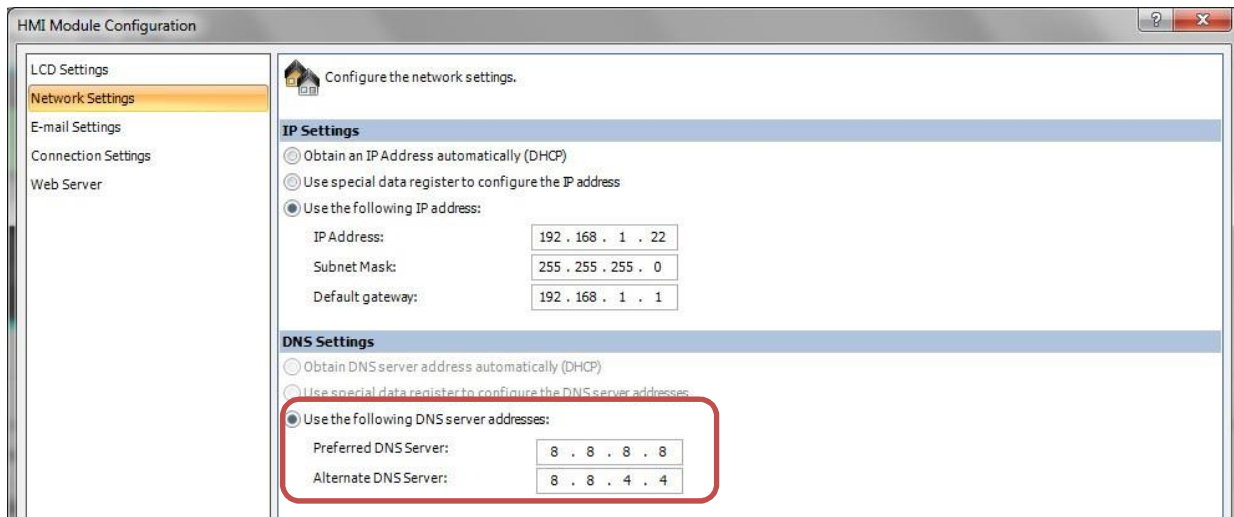


# Application Notes

## How to configure Gmail email server with MicroSmart FC6A HMI Module

1. In HMI Module Configuration → Network Settings, configure HMI Module IP address and DNS Settings

- a. For DNS Settings, select “Use the following DNS server addresses” Preferred DNS Server: 8.8.8.8  
Alternate DNS Server: 8.8.4.4



2. In HMI Module Configuration → Email Settings, configure as follow

- a. General Settings

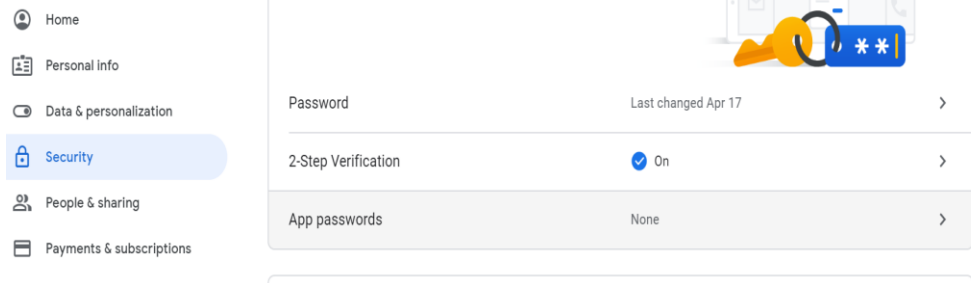
Host Name: smtp.gmail.com  
SMTP Server Port: 465  
Sender Email Address: Your Email  
Address Sender Name: Your Name  
Use secure connection (SSL): Check this box

- b. Optional Settings

Authentication is required to send email: Check this box  
Account Name: Your Email Address  
Password: App Generated Password

- I. Sign in to Gmail account. Click on “Account”
- II. Click on “Security”

### III. Turn on “2-Step” Verification

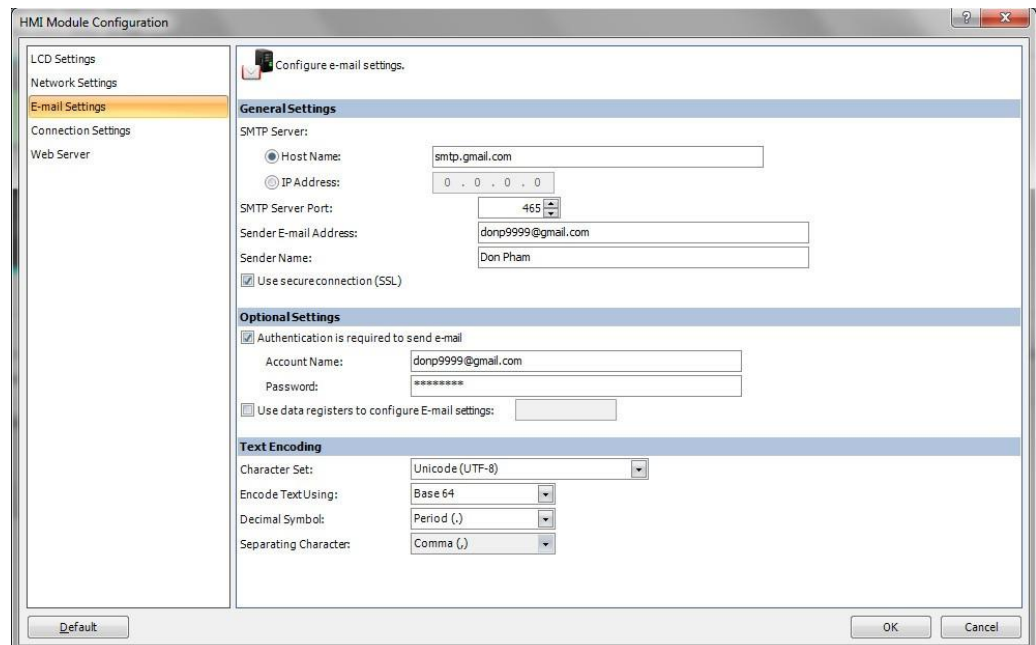
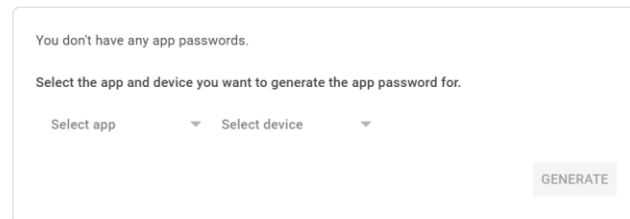


### IV. Click on “App Passwords”

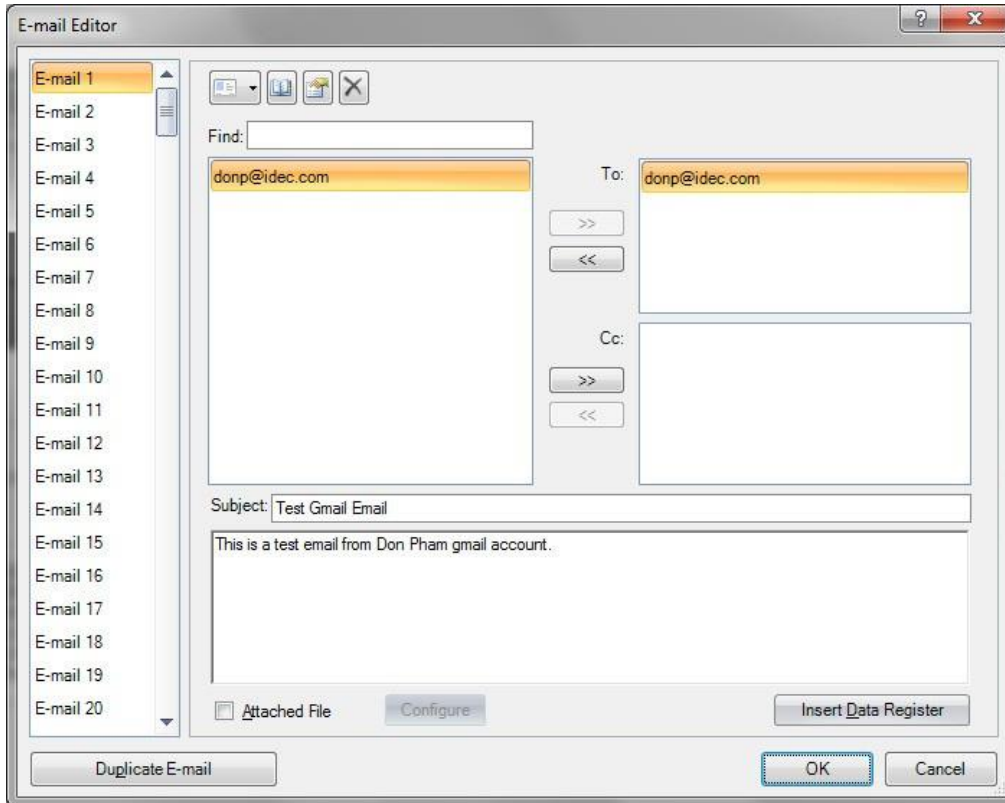
### V. Select app as “Other” and click on “generate”. That is the password that would be used in the WindLDR Software in “Optional Settings”

#### ← App passwords

App passwords let you sign in to your Google Account from apps on devices that don't support 2-Step Verification. You'll only need to enter it once so you don't need to remember it. [Learn more](#)



3. In Project Window → Email Editor, configure Email 1 for email recipe



4. Program email instruction as follow. When internal relay M100 is on, Email 1 is executed.

