

Remote Monitor and Control Configuration

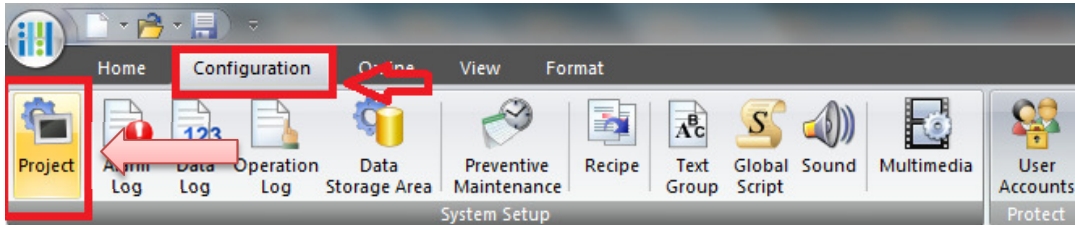
(Applicable for 5.7" HG2G-5FT, 8.4" & 10.4" HG3G, and 12.1" HG4G Series OI Touchscreens)



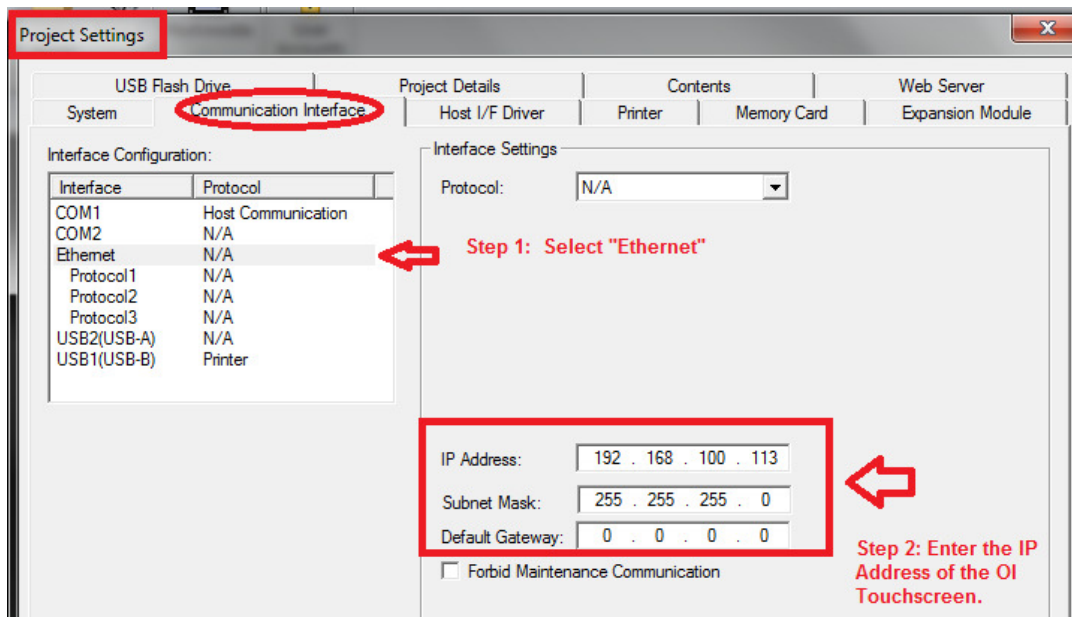
How to Configure the OI Touchscreens for Remote Monitor and Control

Instructions:

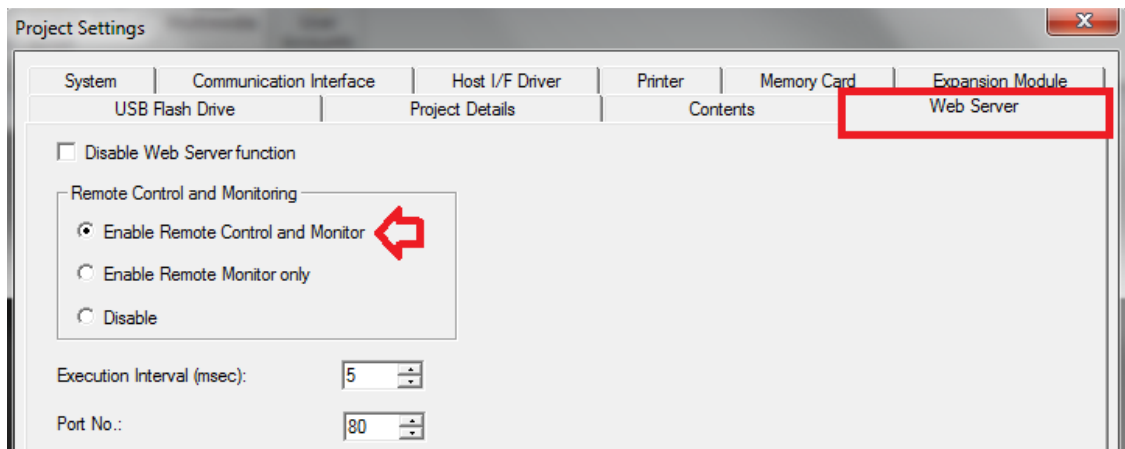
1. In WindOINV2 Software, select **Configuration** and click the **Project Settings**.



2. In **Project Settings**, select **Communication Interface** tab. Under the **Interface Configuration**, select **Ethernet**. Last, assign the **IP Address** for your OI Touchscreen.

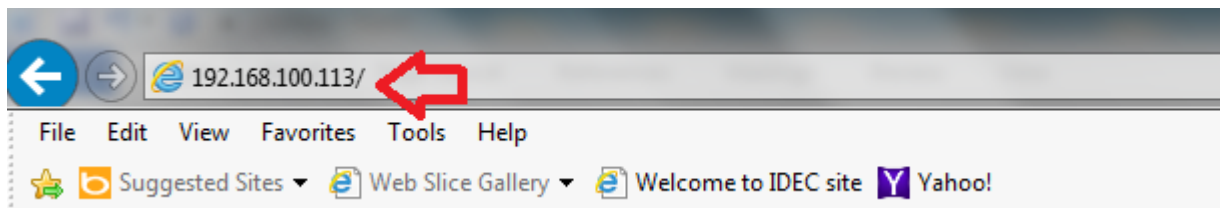


- Next, select the **Web Server** tab in the Project Settings
You will find 3 options under Remote Control and Monitoring. In this example, “Enable Remote Control and Monitor” is selected.

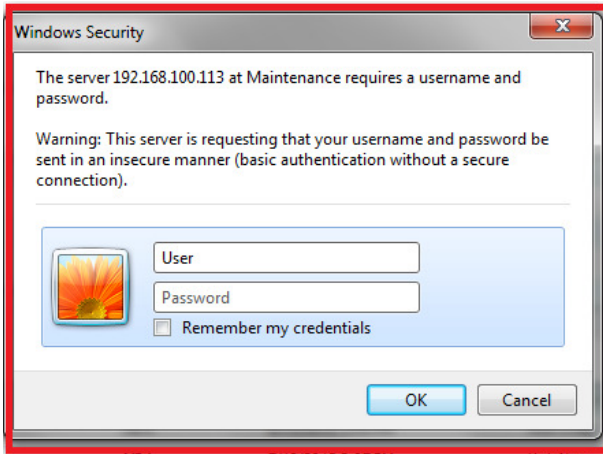


Click the OK button to close the Project Settings.

- Go to your IE browser and enter the IP Address of the touchscreen. The IP Address used in the example is : 192.168.100.113



5. If you are able to connect, then you will see this **Windows Security** (as shown below).



Note:

- If you added a password in your touchscreen project, then you will need to enter a User ID and a Password.
- If you didn't add a Password in your project, then all you have to do is enter the User ID as "User" and leave the Password blank.

Press the OK button when finished.

6. Now you will see the System Information window (as shown below), select “Control” (located on the left side) . This will allow you to remotely monitor and control your touchscreen.

System Information

Mode : Run Mode
Error : None

System	
Model No.	HG3G-8JT22MF.*
Project Name	Demo_HG3G_MLT_111912_ROOM
System Version	3.72
HG System Time(m/d/y h:m:s)	10/03/2013 00:38:31
Host I/F	
Driver Name	No Host
Driver Version	-----
O/I Link	
Baud Rate [bps]	-----
Type	-----
Slave Registration Settings	-----
Slave Online Status	-----

[More Information](#)
[Menu](#)
[Home](#)

Below image is only an example of a project on what you will see next.

As a suggestion, you may want to select 256 Color Picture Format for quicker response.

Example:

Remote Control

[\[Maximize\]](#)

Picture Format

65536 Color JPEG Format(Slow)

256 Color Bitmap Format(Fast) ←

Control Options

Disable Control From Other Clients

Time-out min

Disable Control From Touch Panel

Time-out min

Operation Panel

Operation Status

Run

Reset

Production Status

Production History

Parts Supply

Product Select

The End