

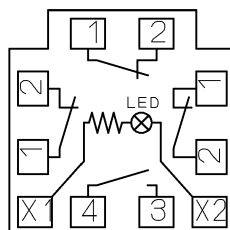
Panel Cut-Out

\*The 3.2<sup>+0.2</sup> recess is not necessary when neither nameplate nor anti-rotation ring is used.

Operation Type	: Pushlock
Reset	: Turnreset or Pullreset
□□ (Contact Arrangement)	: 01 (1b), 02 (2b), 03 (3b), 04 (4b) 11 (1a-1b), 12 (1a-2b), 13 (1a-3b), 22 (2a-2b)
* (Button Color)	: R (Red)

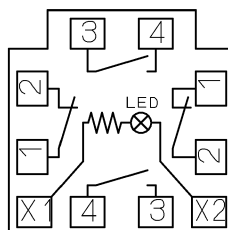
Contact Configuration (Bottom View)

Monitor contact  
(NO contact) included  
TOP Marking Side

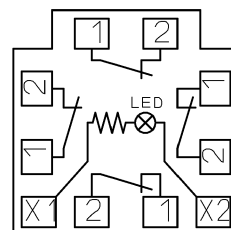


1NC: Terminals on the top.  
2NC: Terminals on the right and left.

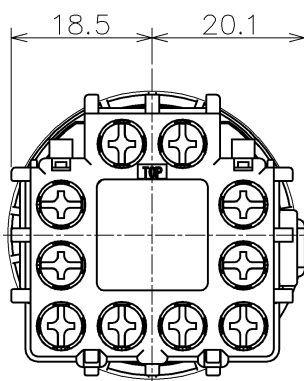
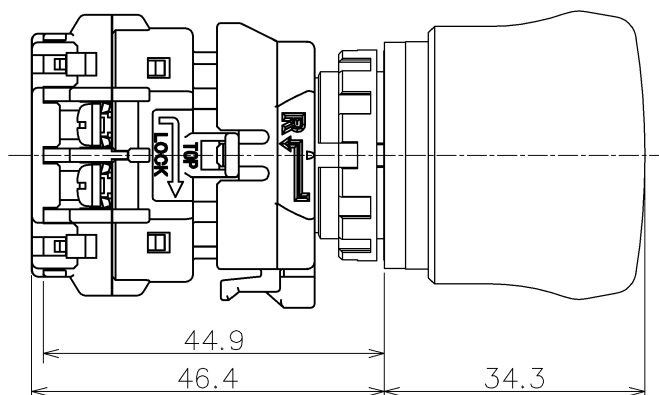
Monitor contact  
(2NO contact) included  
TOP Marking Side



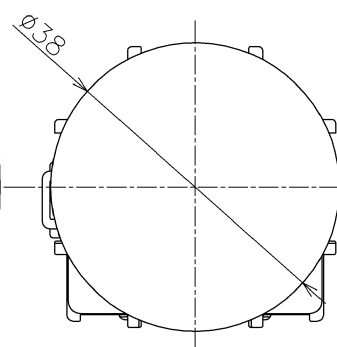
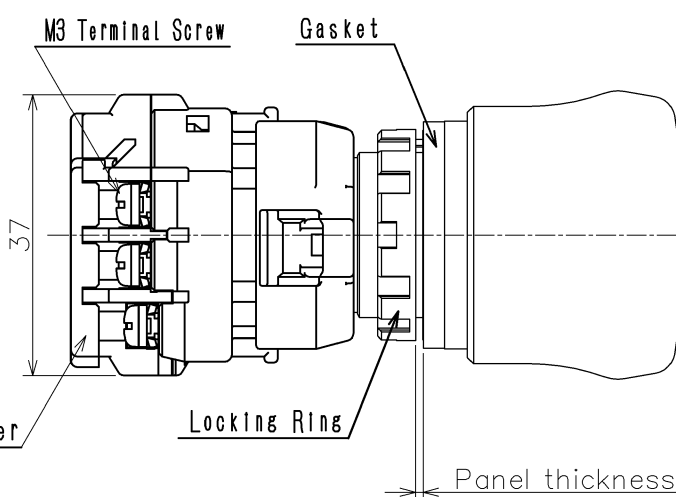
Main contact  
(NO contact) only  
TOP Marking Side



1NC: Terminals on the right.  
2NC: Terminals on the right and left.  
3NC: Terminals on the right, left and top.



Terminal Cover  
XW9Z-VL2M



Product Name: XW SERIES EMERGENCY STOP SWITCH

Type Number: XW1E-LV4TG□□Q4M\*

Approved by	S.TAKAHASHI	SEP.23,2016
Checked by	H.OKAMURA	SEP.23,2016
Drawn by	T.MATSUMOTO	SEP.23,2016

Dim.: mm

Outside View

Drawing No. MA4-A04991