

Data File Manager



Welcome to Data File Manager!

Thank you for using the "Data File Manager".

Data File Manager is maintenance software for PLC and operator interface. The software provides data maintenance of the operating device through communication. To use Data File Manager, connect the PC and PLC or operator interface via USB or Ethernet. Then, connect from the Data File Manager to start the communication.

Highlights of the Data File Manager are as follows.

Intuitive operability

Buttons on the tool menu, drag & drop, and context menu with a right click are supported to use each function.

Tree view for data in the external memory device

Files and folders in the SD memory card or USB flash drive are shown in a tree structure and target files can easily be found.

Operations for files and folders

Files and folders can be added, renamed, or deleted.

PLC maintenance

Viewing the PLC status, such as Run/Stop state or error status, downloading/uploading user programs, and upgrading the system software of the PLC are supported.

Operator interface maintenance

Viewing the operator interface's target information, such as system software version or external memory device information, and downloading/uploading the project are supported.

Notes - Data File Manager

There are the following notes when you use Data File Manager:

Downloading or uploading the user program (PLC)

The user program for Data File Manager can be created using WindLDR. For downloading the user program to the PLC, you must specify the ZLD file created by WindLDR. As for uploading the user program from the PLC, the uploaded file, ZLD file, is saved on the PC. The uploaded ZLD file can be opened and edited using WindLDR.

Downloading or uploading the project file (operator interface)

The project file for Data File Manager can be created using WindO/I-NV4. For downloading the project file to the operator interface, you must specify the ZNV or ZNX file created by WindO/I-NV4. As for uploading the project file from the operator interface, the uploaded file, the ZNV file, is saved on the PC. The uploaded ZNV file can be opened and edited using WindO/I-NV4.

Data File Manager Ver.4.2.0

<Application Software>

The following functions have been introduced.

- ▶ PLC system software is updated.
- ▶ Changes have been made to improve security when working with project data.
(HG5G/4G/3G/2G-V models, HG4G/3G/2G-5F models, HG2G-5T models, HG1G/1P models)

Data File Manager Ver.4.1.0

<Application Software>

The following functions have been introduced.

- ▶ PLC system software is updated.
- ▶ Data File Manager now supports the FT1J and HG1J models.
- ▶ The IP address search function has been improved. Details are as follows.
 - The following models other than HG2J and FT2J also support the IP address search function.
 - FT1J model, HG1J model
 - HG5G/4G/3G/2G-V models
 - HG4G/3G models
 - HG2G-5F/-5T models
 - HG1G/1P models
 - As all HMI models support the IP address search function, the "Target Device" in the Connection Settings dialog has been unified from "HMI (HG5G/4G/3G/2G-V, HG4G/3G, HG2G-5F/-5T, HG1P/1G)" and "HMI (FT2J-7U, HG2J-7U)" to "HMI" to enable seamless operation.
- ▶ The command line parameter "\cf_download" now supports the following options for downloading certificates, etc. to a USB memory inserted in the FT1J/2J or HG1J/2J.
 - "-PF" (mqtt_basic_settings.ini file)
 - "-MRC" (root certificate of server certificate)
 - "-MCC" (Client Certificate)
 - "-MCP" (Client Private Key)
- ▶ The maximum data limit for downloading and uploading device addresses (LDR and LKR) has been increased.
- ▶ Since port 2541 is used during maintenance communication with HMI models, it has been made impossible to specify 2541 as the "Port Number" in "After downloading, change the settings of Target " in the "Target IP Address Settings" dialog.
- ▶ Improved the GUI for searching IP addresses and setting network settings for PLCs (FC6A type CPU module Plus16 point type, Plus32 point type).
 - You can now select all search results with network configurable options by pressing Ctrl + A.
 - The progress and results of IP address search and network configuration are now displayed in the bottom left corner of the dialog.
- ▶ Input for the address bar in the post-connection dialog is now always enabled.
- ▶ The "Battery Voltage" of the PLC is now displayed in mV in the "Details pane" of the post-connection dialog.

Bugs Fixed

The following problem has been fixed:

- ▶ When you download a ZNX project file and update the OS of an HG2J model connected wirelessly to a gateway via another gateway, no error message is displayed.
- ▶ Device download and device upload of control device for FT2J model via command line fails.
- ▶ When using a network adapter that is removable from the PC, you may not be able to connect to the main unit.

Data File Manager Ver.4.0.1

<Application Software>

The following functions have been introduced.

- ▶ PLC system software is updated.

Data File Manager Ver.4.0.0

<Application Software>

The following functions have been introduced.

- ▶ PLC system software is updated.
- ▶ Data File Manager now supports the FT2J-7U model.
The following control functions can be used.
 - Start/stop ladder program
 - Download/upload/clear control device values
 - Clear control function errors
- ▶ Added IP address search function for the connected device. The function facilitates connection configuration enabling users to connect to the device with ease. Please note that this function is only supported by HMI(FT2J-7U, HG2J-7U).
- ▶ The "-E" command line option for clearing errors is now supported for PLC models.
- ▶ Added IP address search function and network modification function for the PLC (FC6A series CPU module: Plus 16-I/O type, Plus 32-I/O type).

Data File Manager Ver.3.1.6

<Application Software>

The following functions have been introduced.

- ▶ PLC system software is updated.

Data File Manager Ver.3.1.5

<Application Software>

The following functions have been introduced.

- ▶ PLC system software is updated.

Data File Manager Ver.3.1.3

<Application Software>

The following functions have been introduced.

- ▶ PLC system software is updated.

Data File Manager Ver.3.1.2

<Application Software>

The following functions have been introduced.

- ▶ PLC system software is updated.

Data File Manager Ver.3.1.1

<Application Software>

Bugs Fixed

The following problem has been fixed:

- ▶ Data File Manager freezes when one of the following operations is performed on HG2J-7U.
 - ZNV download/upload
 - ZNX download
 - Download files/folders to an external memory device
 - Upload files/folders from an external memory device
 - Create a new folder in an external memory device
 - Rename a file/folder in an external memory device
 - Delete files/folders in an external memory device

Data File Manager Ver.3.1.0

<Application Software>

The following functions have been introduced.

- ▶ PLC system software is updated.
- ▶ "Connection Setting" dialog box's label positions have been adjusted.

Data File Manager Ver.3.0.0

<Application Software>

The following functions have been introduced.

- ▶ Data File Manager now supports the HG2J-7U model.
- ▶ Supported PLC model names have been standardized to that of WindLDR.
- ▶ Font names displayed on the detail pane when connected to MICRO/I have been standardized to that of WindO/I-NV4.
- ▶ PLC system software is updated.

Data File Manager Ver.2.13.0

<Application Software>

The following functions have been introduced.

- ▶ PLC system software is updated.
- ▶ "Enhanced protection mode" for FC6A and FT1A Pro/Lite is now supported.

Data File Manager Ver.2.12.1

<Application Software>

The following functions have been introduced.

- ▶ PLC system software is updated.

Data File Manager Ver.2.12.0

<Application Software>

The following functions have been introduced.

- ▶ PLC system software is updated.
- ▶ The following new options are added to the command line parameter "\cf_download".
 - "-SC" (Certificate)
 - "-SP" (Private Key)

Bugs Fixed

The following problem has been fixed:

- ▶ If "-MRC", "-MCC", or "-MCP" option of the command line parameter "\cf_download" is used to download a certificate or private key, then it gets downloaded to the incorrect destination folder.

Data File Manager Ver.2.11.1

<Application Software>

The following functions have been introduced.

- ▶ PLC system software is updated.

Bugs Fixed

The following problem has been fixed:

- ▶ PC may take a long time to recognize display during the Runtime system download and the download may fail.
- ▶ Data File Manager's language automatically becomes Japanese even if a user selects English or Chinese during the installation process.

Data File Manager Ver.2.11.0

<Application Software>

The following functions have been introduced.

- ▶ PLC system software is updated.
- ▶ The new option "-SFDF" is added to the command line parameter "\cf_upload". The new option is used for uploading the file stored in the SD memory card of the FC6A series or FT1A Pro/Lite series to the PC.
- ▶ The following new options are added to the command line parameter "\cf_download". The new options are used for downloading file like certificate to the SD memory card of FC6A Plus.
 - "-PF" (mqtt_basic_settings.ini file)
 - "-MRC" (Root Certificate of the server certificate)
 - "-MCC" (Client Certificate)
 - "-MCP" (Client Private Key)

Bugs Fixed

The following problem has been fixed:

- ▶ If Data File Manager is executed on the command line with one of the following parameters to the SD memory card of the FT1A Pro/Lite series, the result fails.
 - \cf_upload
 - \cf_initialize

Data File Manager Ver.2.10.3

<Application Software>

The following functions have been introduced.

- ▶ PLC system software is updated.

Data File Manager Ver.2.10.2

<Application Software>

The following functions have been introduced.

- ▶ PLC system software is updated.

Data File Manager Ver.2.10.1

<Application Software>

The following functions have been introduced.

- ▶ PLC system software is updated.

Bugs Fixed

The following problem has been fixed:

- ▶ During password authentication with MICRO/I, "Check User Name and Password" dialog box appears slowly.

Data File Manager Ver.2.10.0

<Application Software>

The following functions have been introduced.

- ▶ PLC system software is updated.
- ▶ When downloading FC6A system software for downgrade, download is skipped.
- ▶ The following functions have been added to the security function of MICRO/I.
 - Increased maximum user name's length to 16 words.
 - Increased types of string that can be used for the password.
- ▶ In the "Target IP Address List" dialog box and "Target IP Address Settings" dialog box for MICRO/I, the meaning of each setting has been clarified. Also, the initial setting now sets the IP setting in the "Communication Interface" tab of the "Project Settings" dialog box to a display.
- ▶ The shortcut function created in the Windows OS start menu during Data File Manager installation has been moved to the Data File Manager help menu.

Data File Manager Ver.2.9.1

<Application Software>

The following functions have been introduced.

- ▶ PLC system software is updated.

Data File Manager Ver.2.9.0

<Application Software>

The following functions have been introduced.

- ▶ PLC system software is updated.
- ▶ The system software downloading for digital I/O module (Hardware version V120) is supported.

Data File Manager Ver.2.8.0

<Application Software>

The following functions have been introduced.

- ▶ HGxG-V is supported.
- ▶ HG1P is supported.
- ▶ Download option which does not clear log data during ZNV project download is supported.

Bugs Fixed

The following problem has been fixed:

- ▶ When executed from the command line, ZLD project file cannot be downloaded to the PLC.

Data File Manager Ver.2.5.3

<Application Software>

The following functions have been introduced.

- ▶ PLC system software is updated.

Bugs Fixed

The following problem has been fixed:

- ▶ When decimal symbol in [Region and Language] of Windows OS is not period, Data File Manager cannot connect to MICRO/I.

Data File Manager Ver.2.5.2

<Application Software>

The following functions have been introduced.

- ▶ PLC system software is updated.
- ▶ When the system software version 1.00 or 1.01 of FC6A Analog Module is downloaded, warning message is displayed.

Bugs Fixed

The following problem has been fixed:

- ▶ Downloading / uploading device address data toward Expansion Data Register of FC5A-D12 fails.
- ▶ When Log data is uploaded from MICRO/I which is configured more than 2 channels of Data Log, uploaded CSV file from internal memory is different from Downloader's one.

Data File Manager Ver.2.5.1

<Application Software>

The following functions have been introduced.

- ▶ PLC system software is updated.

Data File Manager Ver.2.5.0

<Application Software>

The following functions have been introduced.

- ▶ PLC system software is updated.
- ▶ Password authentication with MICRO/I is improved to require entering user name.
- ▶ When downloading a ZNV project file, whether to clear Keep Device can be selected.

Data File Manager Ver.2.4.3

<Application Software>

The following functions have been introduced.

- ▶ PLC system software is updated.

Data File Manager Ver.2.4.2

<Application Software>

The following functions have been introduced.

- ▶ PLC system software is updated.

Data File Manager Ver.2.4.1

<Application Software>

The following functions have been introduced.

- ▶ PLC system software is updated.

Data File Manager Ver.2.4.0

<Application Software>

The following functions have been introduced.

- ▶ PLC system software is updated.
- ▶ FC6A Plus is supported.
- ▶ Downloading system software to the following expansion modules/ cartridges is supported.
 - Communication Module
 - Expansion Interface Remote Master Module
 - Expansion Interface Remote Slave Module
 - Bluetooth Communication Cartridge
- ▶ Downloading System software included in ZLD project file is supported when ZLD project file contains the system software.
- ▶ Changing the maintenance communication port number of MICRO/I in Ethernet communication is supported.

Bugs Fixed

The following problem has been fixed:

- ▶ After a ZNV project file is downloaded to HGxG, changing network setting may not be worked.

Data File Manager Ver.2.3.0

<Application Software>

The following functions have been introduced.

- ▶ PLC system software is updated.
- ▶ Downloading/Uploading PLC device data is supported.
- ▶ The command line for PLC is supported.
- ▶ Clearing all device data and clearing errors of PLC are supported.
- ▶ Exploring folders and files in the external memory of MICRO/I is supported.

Data File Manager Ver.2.2.1

<Application Software>

The following functions have been introduced.

- ▶ PLC system software is updated.

Data File Manager Ver.2.2.0

<Application Software>

The following functions have been introduced.

- ▶ PLC system software is updated.
- ▶ Saving the execution history of the command lines is supported.
- ▶ Chinese version of user's manual is added.

Bugs Fixed

The following problems have been fixed:

- ▶ When Data File Manager is launched with the user privilege, "Type Number" may not be show on Detailed Status screen for HMI.

Data File Manager Ver.2.1.2

<Application Software>

The following functions have been introduced.

- ▶ PLC system software is updated.

Data File Manager Ver.2.1.1

<Application Software>

Bugs Fixed

The following problems have been fixed:

- ▶ When ZLD Project file is downloaded, "User program syntax error" may occur in PLC.

Data File Manager Ver.2.1.0

<Application Software>

The following functions have been introduced.

- ▶ PLC Program File (*.zld) and ZNV Project File (*.znv) are associated with Data File Manager in Windows OS.
 - When a zld/znv file is double clicked, Data File Manager is launched and the file is downloaded.
 - The action when a zld/znv file is double clicked can be configured in "Data File Manager Option" dialog.

Bugs Fixed

The following problems have been fixed:

- ▶ "Argument is incorrect." is displayed when multiple files are specified in command line format for the following functions:
 - Upload ZNV Project File
 - Upload Log Data
 - Upload Files from External Memory Device
 - Clear Files from External Memory Device
- ▶ If the project containing pictures registered on "Picture Manager" is uploaded from MICRO/I to create a ZNV Project File using Data File Manager, WindO/I-NV4 cannot restore the project in the created ZNV Project File properly.

Data File Manager Ver.2.0.1

<Application Software>

The following functions have been introduced.

- ▶ Even if this software is installed to the PC which is not connected to Internet, Microsoft .NET Framework 4 is installed.
- ▶ When installation of this software is completed, a message is displayed to prompt to restart PC.

Data File Manager Ver.2.0.0

<Application Software>

The following functions have been introduced.

- ▶ PLC system software is updated.
- ▶ Windows 10 is supported.
- ▶ MICRO/I maintenance is supported
 - View Target Information
 - Download/Upload project data
 - Download/Upload to external memory
 - Read/Write device address data
 - Clear data

Bugs Fixed

The following problems have been fixed:

- ▶ Data File Manager tries to access SD card even when connected PLC is FT1A-12/24 which does not support SD card.

Data File Manager Ver.1.2.1

<Application Software>

The following functions have been introduced.

- ▶ PLC system software is updated.

Bugs Fixed

The following problems have been fixed:

- ▶ Uploading the user program which is made by WindLDR version 8.2.0 for FC6A may fail.

Data File Manager Ver.1.2.0

<Application Software>

The following functions have been introduced.

- ▶ PLC system software is updated.
- ▶ Running and stopping PLC

Data File Manager Ver.1.1.1

<Application Software>

The following functions have been introduced.

- ▶ PLC system software is updated.

Data File Manager Ver.1.1.0

<Application Software>

The following functions have been introduced.

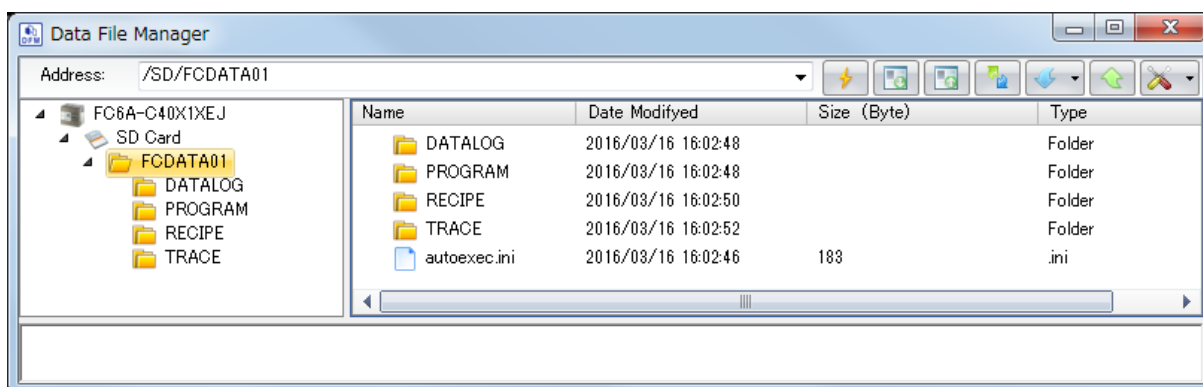
- ▶ PLC system software is updated.
- ▶ System software download function for HMI module

Data File Manager Ver.1.0.0

<Application Software>

1. SD memory card data management

Files and folders in SD memory card inserted in FC6A or FT1A Pro/Lite can be viewed in a tree structure. You can manage data in SD memory card with operations, such as adding, deleting, or renaming files/folders.



2. PLC maintenance

You can view the PLC status, such as Run/Stop state or error status, download/upload user programs, or upgrade the system software of the PLC.

